

APPENDIX M: Comment Letters

CONTENTS

1. Sean Carlson, Received April 28, 2022 (31 pages)
- 1a. Pro Forma Owner's Policy of Title Insurance (see Chapter 2, Response to Comment 2.2)
- 2 Mitchell M. Tsai, Received May 3, 2022 (1 page)



THE METROPOLITAN WATER DISTRICT
OF SOUTHERN CALIFORNIA

Office of the General Manager

April 28, 2022

Via Electronic Mail

Harald Luna, Senior Planner
290 North D Street
San Bernardino, CA 92401

Dear Harald Luna:

Notice of Intent to Adopt a
Mitigated Negative Declaration for the Industrial Parkway Project

The Metropolitan Water District of Southern California (Metropolitan) reviewed the Notice of Intent to Adopt a Mitigated Negative Declaration for the Industrial Parkway Project (Project). The City of San Bernardino is acting as the Lead Agency under the California Environmental Quality Act (CEQA). The Project proposes to demolish an existing 34,000 square foot (SF) industrial building and construct a truck terminal building with approximately 46,160 SF of warehouse space, a 3,000 SF ground floor office, and a 3,000 SF mezzanine. The project also proposes to construct trailer and passenger vehicle parking, and establish 44,669 SF of landscaping. This letter contains Metropolitan's response to the public notice as a potentially affected public agency.

Metropolitan is a public agency and regional water wholesaler. It is comprised of 26 member public agencies, serving approximately 19 million people in portions of six counties in Southern California. Metropolitan's mission is to provide its 5,200 square mile service area with adequate and reliable supplies of high-quality water to meet present and future needs in an environmentally and economically responsible way.

Our review of the notice indicates that Metropolitan owns and operates the Rialto Pipeline and appurtenant facilities within the Project's proximity. The aforementioned pipeline and appurtenant facilities deliver untreated water from the Colorado River to Metropolitan reservoirs and water treatment plants. Metropolitan is concerned with potential impacts to the pipeline and appurtenant facilities that may result from the construction and implementation of the proposed Project. The enclosed map shows Metropolitan facilities in relation to the proposed project. It will be necessary for the City to consider these facilities in its project planning.

Metropolitan must be allowed to maintain its rights-of-way and requires unobstructed access to its facilities in order to maintain and repair its system. In order to avoid potential conflicts with

Harald Luna, Senior Planner

Page 2

April 28, 2022

Metropolitan's facilities and rights-of-way, we require that any design plans for any activity in the area of Metropolitan's pipelines or facilities be submitted for our review and written approval. Metropolitan will not permit procedures that could subject the pipeline to excessive vehicle, impact or vibratory loads. Any future design plans associated with this project should be submitted to Metropolitan's Substructures Team. Approval of the project should be contingent on Metropolitan's approval of design plans for portions of the proposed project that could impact its facilities.

Detailed prints of drawings of Metropolitan's pipelines and rights-of-way may be obtained by calling Metropolitan's Substructures Information Line at (213) 217-7663 or via email at EngineeringSubstructures@mwdh2o.com. To assist the applicant in preparing plans that are compatible with Metropolitan's facilities and easements, attached are the "Guidelines for Improvements and Construction Projects Proposed in the Area of Metropolitan's Facilities and Rights-of-Way." Please note that all submitted designs or plans must clearly identify Metropolitan's facilities and rights-of-way.

Additionally, Metropolitan encourages projects within its service area to include water conservation measures. Water conservation, reclaimed water use, and groundwater recharge programs are integral components to regional water supply planning. Metropolitan supports mitigation measures such as using water efficient fixtures, drought-tolerant landscaping, and reclaimed water to offset any increase in water use associated with the proposed project.

We appreciate the opportunity to provide input to your planning process and we look forward to receiving future documentation and plans for this project. For further assistance, please contact Ms. Jolene Ditmar at (213) 217-6184 or jditmar@mwdh2o.com.

Very truly yours,

Sean Carlson
Team Manager, Environmental Planning Section

JD:rdl

Sharepoint\San Bernardino City\Industrial Parkway Project

Enclosures:

- (1) Map
- (2) Planning Guidelines for Improvements and Construction Projects Proposed in the Area of Metropolitan's Facilities and Rights-of-Way



Approximate Project Footprint

Palm Ave

W Historic Rte 66

Hallmark Pkwy

Industrial Pkwy

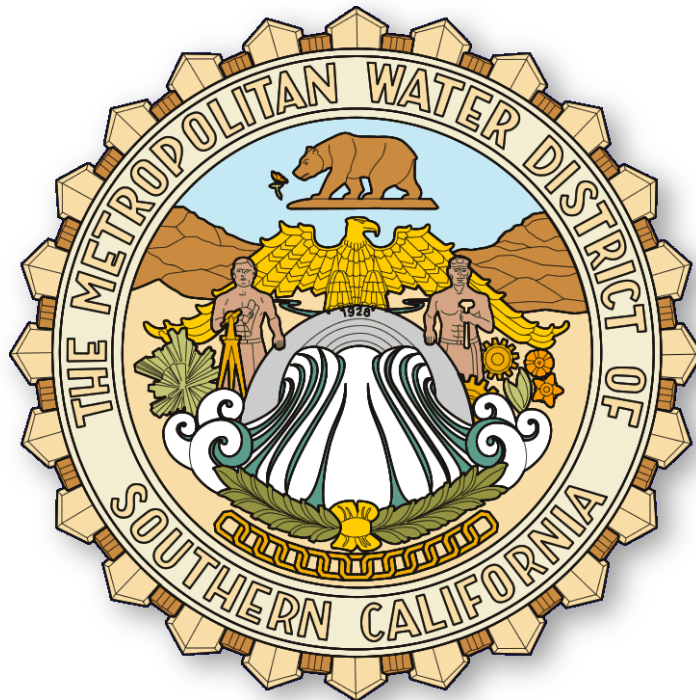
Hallmark Pkwy

Right of Way

- Fee
- Easement
- Water Right
- Subsurface Right

Google Earth

**Guidelines for
Improvements and Construction Projects Proposed
in the Area of
Metropolitan's Facilities and Rights-of-Way**



July 2018

Prepared By:
The Metropolitan Water District of Southern California
Substructures Team, Engineering Services
700 North Alameda Street
Los Angeles, California 90012

Copyright © 2018 by *The Metropolitan Water District of Southern California*.

Additional Copies: To obtain a copy of this document, please contact the Engineering Services Group, Substructures Team.

Disclaimer

Metropolitan assumes no responsibility for the accuracy of the substructure information herein provided. The user assumes responsibility for verifying substructure locations before excavating and assumes all liability for damage to Metropolitan's facilities as a result of such excavation. Additionally, the user is cautioned to conduct surveys and other field investigations as deemed prudent, to assure that project plans are correct. The appropriate representative from Metropolitan must be contacted at least two working days, before any work activity in proximity to Metropolitan's facilities.

It generally takes 30 days to review project plans and provide written responses. Metropolitan reserves the right to modify requirements based on case-specific issues and regulatory developments.

PUBLICATION HISTORY:

Initial Release

July 2018

Table of Contents

1.0	GENERAL INFORMATION	1
1.1	Introduction.....	1
1.2	Submittal and Review of Project Plans/Utilities and Maps.....	1
1.3	Identification of Metropolitan’s Facilities and Rights-of-Way.....	3
2.0	General Requirements	3
2.1	Vehicular Access	3
2.2	Fences.....	3
2.3	Driveways and Ramps.....	3
2.4	Walks, Bike Paths, and Trails	3
2.5	Clear Zones	4
2.6	Slopes.....	4
2.7	Structures	4
2.8	Protection of Metropolitan Facilities	4
2.9	Potholing of Metropolitan Pipelines	4
2.10	Jacked Casings or Tunnels.....	4
3.0	Landscaping.....	5
3.1	Plans.....	5
3.2	Drought-Tolerant Native and California Friendly Plants.....	5
3.3	Trees	5
3.4	Other Vegetation.....	6
3.5	Irrigation.....	6
3.6	Metropolitan Vehicular Access.....	6
4.0	General Utilities.....	6
4.1	Utility Structures.....	6
4.2	Utility Crossings	6
4.3	Longitudinal Utilities	7
4.4	Underground Electrical Lines	7
4.5	Fiber Optic Lines.....	7
4.6	Overhead Electrical and Telephone Lines.....	7
4.7	Sewage Disposal Systems.....	7
4.8	Underground Tanks	8
5.0	Specific Utilities: Non-Potable Utility Pipelines.....	8
6.0	Cathodic Protection/Electrolysis Test Stations.....	8
6.1	Metropolitan Cathodic Protection	8
6.2	Review of Cathodic Protection Systems.....	8
7.0	Drainage.....	9
7.1	Drainage Changes Affecting Metropolitan Rights-of-Way.....	9
7.2	Metropolitan’s Blowoff and Pumpwell Structures.....	9
8.0	Grading and Settlement.....	9

Table of Contents

8.1	Changes in Cover over Metropolitan Pipelines.....	9
8.2	Settlement	9
9.0	Construction Equipment	10
9.1	Review of Proposed Equipment.....	10
9.2	Equipment Restrictions	10
9.3	Vibratory Compaction Equipment.....	10
9.4	Equipment Descriptions	10
10.0	Excavations Close to Metropolitan Facilities.....	11
10.1	Shoring Design Submittal.....	11
10.2	Shoring Design Requirements	11
11.0	Support of Metropolitan Facilities.....	11
11.1	Support Design Submittal	11
11.2	Support Design Requirements	11
12.0	Backfill.....	12
12.1	Metropolitan Pipeline Not Supported.....	12
12.2	Metropolitan Pipeline Partially Exposed	12
12.3	Metropolitan Cut and Cover Conduit on Colorado River Aqueduct (CRA)	12
13.0	Piles	13
13.1	Impacts on Metropolitan Pipelines	13
13.2	Permanent Cast-in-place Piles.....	13
14.0	Protective Slabs for Road Crossings Over Metropolitan Pipelines	13
15.0	Blasting	13
16.0	Metropolitan Plan Review Costs, Construction Costs and Billing.....	14
16.1	Plan Review Costs.....	14
16.2	Cost of Modification of Facilities Performed by Metropolitan	14
16.3	Final Billing	14
17.0	Street Vacations and Reservation of Easements for Metropolitan	14
18.0	Metropolitan Land Use Guidelines.....	14
19.0	Compliance with Environmental Laws and Regulations.....	15
20.0	Paramount Rights / Metropolitan's Rights within Existing Rights-of-Way	17
21.0	Disclaimer and Information Accuracy	17

Table of Contents

Table 1: General Guidelines for Pipeline Separation between Metropolitan’s Pipeline¹ and Sanitary Sewer² or Hazardous Fluid Pipeline³18

Table 2: General Guidelines for Pipeline “Separation between Metropolitan’s Pipeline¹ and Storm Drain and/or Recycled Water²19

Table 3: General Guidelines for Pipeline “Separation¹ between Metropolitan’s Pipeline and Recycled Water^{2,4} Irrigationsm,20

Figure 1: AASHTO H-20 Loading21

Figure 2: Drawing SK-122

This page is intentionally blank.

1.0 GENERAL INFORMATION

Note: Underground Service Alert at 811 must be notified at least two working days before excavating in proximity to Metropolitan's facilities.

1.1 Introduction

These guidelines provide minimum design and construction requirements for any utilities, facilities, developments, and improvements, or any other projects or activities, proposed in or near Metropolitan Water District of Southern California (Metropolitan) facilities and rights-of-way. Additional conditions and stipulations may also be required depending on project and site specific conditions. Any adverse impacts to Metropolitan's conveyance system, as determined by Metropolitan, will need to be mitigated to its satisfaction.

All improvements and activities must be designed so as to allow for removal or relocation at builder or developer expense, as set forth in the paramount rights provisions of Section 20.0. Metropolitan shall not be responsible for repair or replacement of improvements, landscaping or vegetation in the event Metropolitan exercises its paramount rights powers.

1.2 Submittal and Review of Project Plans/Utilities and Maps

Metropolitan requires project plans/utilities be submitted for all proposed activities that may impact Metropolitan's facilities or rights-of-way. Project plans shall include copies of all pertinent utilities, sewer line, storm drain, street improvement, grading, site development, landscaping, irrigation and other plans, all tract and parcel maps, and all necessary state and federal environmental documentation. Metropolitan will review the project plans and provide written approval, as it pertains to Metropolitan's facilities and rights-of-way. Written approval from Metropolitan must be obtained, prior to the start of any activity or construction in the area of Metropolitan's facilities or rights-of-way. Once complete project plans and supporting documents are submitted to Metropolitan, it generally takes 30 days to review and to prepare a detailed written response. Complex engineering plans that have the potential for significant impacts on Metropolitan's facilities or rights-of-way may require a longer review time.

Project plans, maps, or any other information should be submitted to Metropolitan's Substructures Team at the following mailing address:

**Attn: Substructures Team
The Metropolitan Water District of Southern California
700 North Alameda St.
Los Angeles, CA 90012**

**General Mailing Address: P.O. Box 54153
Los Angeles, CA 90054-0153**

Email: EngineeringSubstructures@mwdh2o.com

For additional information, or to request prints of detailed drawings for Metropolitan's facilities and rights-of-way, please contact Metropolitan's Substructures Team at 213-217-7663 or EngineeringSubstructures@mwdh2o.com.

1.3 **Identification of Metropolitan's Facilities and Rights-of-Way**

Metropolitan's facilities and rights-of-way must be fully shown and identified as Metropolitan's, with official recording data, on the following:

- A. All applicable plans
- B. All applicable tract and parcel maps

Metropolitan's rights-of-ways and existing survey monuments must be tied dimensionally to the tract or parcel boundaries. Metropolitan's Records of Survey must be referenced on the tract and parcel maps with the appropriate Book and Page.

2.0 **General Requirements**

2.1 **Vehicular Access**

Metropolitan must have vehicular access along its rights-of-way at all times for routine inspection, patrolling, operations, and maintenance of its facilities and construction activities. All proposed improvements and activities must be designed so as to accommodate such vehicular access.

2.2 **Fences**

Fences installed across Metropolitan's rights-of-way must include a 16-foot-wide gate to accommodate vehicular access by Metropolitan. Additionally, gates may be required at other specified locations to prevent unauthorized entry into Metropolitan's rights-of-way.

All gates must accommodate a Metropolitan lock or Knox-Box with override switch to allow Metropolitan unrestricted access. There should be a minimum 20-foot setback for gates from the street at the driveway approach. The setback is necessary to allow Metropolitan vehicles to safely pull off the road prior to opening the gate.

2.3 **Driveways and Ramps**

Construction of 16-foot-wide commercial-type driveway approaches is required on both sides of all streets that cross Metropolitan's rights-of-way. Access ramps, if necessary, must be a minimum of 16 feet wide.

There should be a minimum 20-foot setback for gates from the street at the driveway approach. Grades of ramps and access roads must not exceed 10 percent; if the slope of an access ramp or road must exceed 10 percent due to topography, then the ramp or road must be paved.

2.4 **Walks, Bike Paths, and Trails**

All walkways, bike paths, and trails along Metropolitan's rights-of-way must be a minimum 12-foot wide and have a 50-foot or greater radius on all horizontal curves if also used as Metropolitan's access roads. Metropolitan's access routes, including all walks and drainage facilities crossing the access routes, must be constructed to American Association of State Highway and Transportation Officials (AASHTO) H-20 loading standards (see Figure 1). Additional requirements will be placed on equestrian trails to protect the water quality of Metropolitan's pipelines and facilities.

2.5 Clear Zones

A 20-foot-wide clear zone is required to be maintained around Metropolitan's manholes and other above-ground facilities to accommodate vehicular access and maintenance. The clear zone should slope away from Metropolitan's facilities on a grade not to exceed 2 percent.

2.6 Slopes

Cut or fill slopes proposed within Metropolitan's rights-of-way must not exceed 10 percent. The proposed grade must not worsen the existing condition. This restriction is required to facilitate Metropolitan use of construction and maintenance equipment and allow uninhibited access to above-ground and below-ground facilities.

2.7 Structures

Construction of structures of any type is not allowed within the limits of Metropolitan's rights-of-way to avoid interference with the operation and maintenance of Metropolitan's facilities and possible construction of future facilities.

Footings and roof eaves of any proposed buildings adjacent to Metropolitan's rights-of-way must meet the following criteria:

- A. Footings and roof eaves must not encroach onto Metropolitan's rights-of-way.
- B. Footings must not impose any additional loading on Metropolitan's facilities.
- C. Roof eaves must not overhang onto Metropolitan's rights-of-way.

Detailed plans of footings and roof eaves adjacent to Metropolitan's rights-of-way must be submitted for Metropolitan's review and written approval, as pertains to Metropolitan's facilities.

2.8 Protection of Metropolitan Facilities

Metropolitan facilities within its rights-of-way, including pipelines, structures, manholes, survey monuments, etc., must be protected from damage by the project proponent or property owner, at no expense to Metropolitan. The exact location, description and method of protection must be shown on the project plans.

2.9 Potholing of Metropolitan Pipelines

Metropolitan's pipelines must be potholed in advance, if the vertical clearance between a proposed utility and Metropolitan's pipeline is indicated to be 4 feet or less. A Metropolitan representative must be present during the potholing operation and will assist in locating the pipeline. Notice is required, a minimum of three working days, prior to any potholing activity.

2.10 Jacked Casings or Tunnels

A. General Requirements

Utility crossings installed by jacking, or in a jacked casing or tunnel under/over a Metropolitan pipeline, must have at least 3 feet of vertical clearance between the outside diameter of the pipelines and the jacked pipe, casing, or tunnel. The actual

cover over Metropolitan's pipeline shall be determined by potholing, under Metropolitan's supervision.

Utilities installed in a jacked casing or tunnel must have the annular space between the utility and the jacked casing or tunnel filled with grout. Provisions must be made for grouting any voids around the exterior of the jacked pipe, casing, or tunnel.

B. Jacking or Tunneling Procedures

Detailed jacking, tunneling, or directional boring procedures must be submitted to Metropolitan for review and approval. The procedures must cover all aspects of operation, including, but not limited to, dewatering, ground control, alignment control, and grouting pressure. The submittal must also include procedures to be used to control sloughing, running, or wet ground, if encountered. A minimum 10-foot clearance must be maintained between the face of the tunneling or receiving pits and outside edges of Metropolitan's facility.

C. Shoring

Detailed drawings of shoring for jacking or receiving pits must be submitted to Metropolitan for review and written-approval. (See Section 10 for shoring requirements).

D. Temporary Support

Temporary support of Metropolitan's pipelines may be required when a utility crosses under a Metropolitan pipeline and is installed by means of an open trench. Plans for temporary support must be reviewed and approved in writing by Metropolitan. (See Section 11, Supports of Metropolitan Facilities).

3.0 Landscaping

3.1 Plans

All landscape plans must show the location and limits of Metropolitan's right-of-way and the location and size of Metropolitan's pipeline and related facilities therein. All landscaping and vegetation shall be subject to removal without notice, as may be required by Metropolitan for ongoing maintenance, access, repair, and construction activities. Metropolitan will not be financially responsible for the removal of any landscaping and vegetation.

3.2 Drought-Tolerant Native and California Friendly Plants

Metropolitan recommends use of drought-tolerant native and California Friendly® plants (excluding sensitive plants) on proposed projects. For more information regarding California Friendly® plants refer to www.bewaterwise.com.

3.3 Trees

Trees are generally prohibited within Metropolitan's rights-of-way as they restrict Metropolitan's ability to operate, maintain and/or install new pipeline(s) located within these rights-of-way. Metropolitan will not be financially responsible for the removal and replacement of any existing trees should they interfere with access and any current or future Metropolitan project located within the right-of-way.

3.4 Other Vegetation

Shrubs, bushes, vines, and groundcover are generally allowed within Metropolitan's rights-of-way. Larger shrubs are not allowed on Metropolitan fee properties; however, they may be allowed within its easements if planted no closer than 15 feet from the outside edges of existing or future Metropolitan facilities. Only groundcover is allowed to be planted directly over Metropolitan pipeline, turf blocks or similar is recommended to accommodate our utility vehicle access. Metropolitan will not be financially responsible for the removal and replacement of the vegetation should it interfere with access and any current or future Metropolitan project.

3.5 Irrigation

Irrigation systems are acceptable within Metropolitan's rights-of-way, provided valves and controllers are located near the edges of the right-of-way and do not interfere with Metropolitan vehicular access. A shutoff valve should also be located along the edge of the right-of-way that will allow the shutdown of the system within the right-of-way should Metropolitan need to do any excavation. No pooling or saturation of water above Metropolitan's pipeline and right-of-way is allowed. Additional restrictions apply to non-potable water such as Recycled Water and are covered on Table 3 of Page 20.

3.6 Metropolitan Vehicular Access

Landscape plans must show Metropolitan vehicular access to Metropolitan's facilities and rights-of-way and must be maintained by the property owner or manager or homeowners association at all times. Walkways, bike paths, and trails within Metropolitan's rights-of-way may be used as Metropolitan access routes. (See Section 2.4, Walks, Bike Paths, and Trails).

4.0 General Utilities

Note: For non-potable piping like sewer, hazardous fluid, storm drain, disinfected tertiary recycled water and recycled water irrigation see Table 1 through Table 3.

4.1 Utility Structures

Permanent utility structures (e.g., manholes, power poles, pull boxes, electrical vaults, etc.) are not allowed within Metropolitan's rights-of-way. Metropolitan requests that all permanent utility structures within public streets be placed as far from its pipelines and facilities as practical, but not closer than 5 feet from the outside edges of Metropolitan facilities.

Note: Non-potable utility pipelines are an exception to the 5-foot minimum clearance. Non-potable utility pipelines should have 10 feet of separation.

4.2 Utility Crossings

Metropolitan requests a minimum of 1 foot of vertical clearance between Metropolitan's pipeline and any utility crossing the pipeline. Utility lines crossing Metropolitan's pipelines must be as perpendicular to the pipeline as possible. Cross-section drawings, showing proposed locations and elevations of utility lines and locations of Metropolitan's pipelines and limits of rights-of-way, must be submitted with utility plans, for all

crossings. Metropolitan's pipeline must be potholed under Metropolitan's supervision at the crossings (See Section 2.9).

4.3 Longitudinal Utilities

Installation of longitudinal utilities is generally not allowed along Metropolitan's rights-of-way. Within public streets, Metropolitan requests that all utilities parallel to Metropolitan's pipelines and appurtenant structures (facilities) be located as far from the facilities as possible, with a minimum clearance of 5 feet from the outside edges of the pipeline.

Note: Non-potable utility pipelines are an exception to the 5-foot minimum clearance. Non-potable utility pipelines should have 10 feet of separation (for more information See Table 1 on Page 18).

4.4 Underground Electrical Lines

Underground electrical conduits (110 volts or greater) which cross a Metropolitan's pipeline must have a minimum of 1 foot of vertical clearance between Metropolitan's pipeline and the electrical lines. Longitudinal electrical lines, including pull boxes and vaults, in public streets should have a minimum separation of 5 feet from the edge of a Metropolitan pipeline or structures.

4.5 Fiber Optic Lines

Fiber optic lines installed by directional boring require a minimum of 3 feet of vertical clearance when boring is over Metropolitan's pipelines and a minimum of 5 feet of vertical clearance when boring is under Metropolitan's pipelines. Longitudinal fiber optic lines, including pull boxes, in public streets should have a minimum separation of 5 feet from the edge of a Metropolitan pipelines or structures. Potholing must be performed, under Metropolitan's supervision, to verify the vertical clearances are maintained.

4.6 Overhead Electrical and Telephone Lines

Overhead electrical and telephone lines, where they cross Metropolitan's rights-of-way, must have a minimum 35 feet of clearance, as measured from the ground to the lowest point of the overhead line. Overhead electrical lines poles must be located at least 30 feet laterally from the edges of Metropolitan's facilities or outside Metropolitan's right-of-way, whichever is greater.

Longitudinal overhead electrical and or telephone lines in public streets should have a minimum separation of 10 feet from the edge of a Metropolitan pipelines or structures where possible.

4.7 Sewage Disposal Systems

Sewage disposal systems, including leach lines and septic tanks, must be a minimum of 100 feet from the outside limits of Metropolitan's rights-of-way or the edge of its facilities, whichever is greater. If soil conditions are poor, or other adverse site-specific conditions exist, a minimum distance of 150 feet is required. They must also comply with local and state health code requirements as they relate to sewage disposal systems in proximity to major drinking water supply pipelines.

4.8 Underground Tanks

Underground tanks containing hazardous materials must be a minimum of 100 feet from the outside limits of Metropolitan's rights-of-way or edge of its facilities, whichever is greater. In addition, groundwater flow should be considered with the placement of underground tanks down-gradient of Metropolitan's facilities.

5.0 Specific Utilities: Non-Potable Utility Pipelines

In addition to Metropolitan's general requirements, installation of non-potable utility pipelines (e.g., storm drains, sewers, and hazardous fluids pipelines) in Metropolitan's rights-of-way and public street rights-of-way must also conform to the State Water Resources Control Board's Division of Drinking Water (DDW) regulation (Waterworks Standards) and guidance for separation of water mains and non-potable pipelines and to applicable local county health code requirements. Written approval is required from DDW for the implementation of alternatives to the Waterworks Standards and, effective December 14, 2017, requests for alternatives to the Waterworks Standards must include information consistent with: DDW's [Waterworks Standards Main Separation Alternative Request Checklist](#).

In addition to the following general guidelines, further review of the proposed project must be evaluated by Metropolitan and requirements may vary based on site specific conditions.

- A. Sanitary Sewer and Hazardous Fluids (General Guideline See Table 1 on Page 18)
- B. Storm Drain and Recycled Water (General Guideline See Table 2 on Page 19)
- C. Irrigation with Recycled Water (General Guideline See Table 3 on Page 20)
- D. Metropolitan generally does not allow Irrigation with recycled water to be applied directly above its treated water pipelines
- E. Metropolitan requests copies of project correspondence with regulating agencies (e.g., Regional Water Quality Control Board, DDW); regarding the application of recycled water for all projects located on Metropolitan's rights-of-way

6.0 Cathodic Protection/Electrolysis Test Stations

6.1 Metropolitan Cathodic Protection

Metropolitan's existing cathodic protection facilities in the vicinity of any proposed work must be identified prior to any grading or excavation. The exact location, description, and type of protection must be shown on all project plans. Please contact Metropolitan for the location of its cathodic protection stations.

6.2 Review of Cathodic Protection Systems

Metropolitan must review any proposed installation of impressed-current cathodic protection systems on pipelines crossing or paralleling Metropolitan's pipelines to determine any potential conflicts with Metropolitan's existing cathodic protection system.

7.0 Drainage

7.1 Drainage Changes Affecting Metropolitan Rights-of-Way

Changes to existing drainage that could affect Metropolitan's rights-of-way require Metropolitan's approval. The project proponent must provide acceptable solutions to ensure Metropolitan's rights-of-way are not negatively affected by changes in the drainage conditions. Plans showing the changes, with a copy of a supporting hydrology report and hydraulic calculations, must be submitted to Metropolitan for review and approval. Long term maintenance of any proposed drainage facilities must be the responsibility of the project proponent, City, County, homeowner's association, etc., with a clear understanding of where this responsibility lies. If drainage must be discharged across Metropolitan's rights-of-way, it must be carried across by closed conduit or lined open channel and must be shown on the plans.

7.2 Metropolitan's Blowoff and Pumpwell Structures

Any changes to the existing local watercourse systems will need to be designed to accommodate Metropolitan's blowoff and pumpwell structures, which periodically convey discharged water from Metropolitan's blowoff and pumping well structures during pipeline dewatering. The project proponents' plans should include details of how these discharges are accommodated within the proposed development and must be submitted to Metropolitan for review and approval. Any blowoff discharge lines impacted must be modified accordingly at the expense of the project proponent.

8.0 Grading and Settlement

8.1 Changes in Cover over Metropolitan Pipelines

The existing cover over Metropolitan's pipelines must be maintained unless Metropolitan determines that proposed changes in grade and cover do not pose a hazard to the integrity of the pipeline or an impediment to its maintenance capability. Load and settlement or rebound due to change in cover over a Metropolitan pipeline or ground in the area of Metropolitan's rights-of-way will be factors considered by Metropolitan during project review.

In general, the minimum cover over a Metropolitan pipeline is 4 feet and the maximum cover varies per different pipeline. Any changes to the existing grade may require that Metropolitan's pipeline be potholed under Metropolitan's supervision to verify the existing cover.

8.2 Settlement

Any changes to the existing topography in the area of Metropolitan's pipeline or right-of-way that result in significant settlement or lateral displacement of Metropolitan's pipelines are not acceptable. Metropolitan may require submittal of a soils report showing the predicted settlement of the pipeline at 10-foot intervals for review. The data must be carried past the point of zero change in each direction and the actual size and varying depth of the fill must be considered when determining the settlement. Possible settlement due to soil collapse, rebound and lateral displacement must also be included.

In general, the typical maximum allowed deflection for Metropolitan's pipelines must not exceed a deflection of 1/4-inch for every 100 feet of pipe length. Metropolitan may require additional information per its Geotechnical Guidelines. Please contact Metropolitan's Substructures Team for a copy of the Geotechnical Guidelines.

9.0 Construction Equipment

9.1 Review of Proposed Equipment

Use of equipment across or adjacent to Metropolitan's facilities is subject to prior review and written approval by Metropolitan. Excavation, backfill, and other work in the vicinity of Metropolitan's facilities must be performed only by methods and with equipment approved by Metropolitan. A list of all equipment to be used must be submitted to Metropolitan a minimum of 30 days before the start of work.

- A. For equipment operating within paved public roadways, equipment that imposes loads not greater than that of an AASHTO H-20 vehicle (see Figure 1 on Page 21) may operate across or adjacent to Metropolitan's pipelines provided the equipment operates in non-vibratory mode and the road remains continuously paved.
- B. For equipment operating within unpaved public roadways, when the total cover over Metropolitan's pipeline is 10 feet or greater, equipment imposing loads no greater than those imposed by an AASHTO H-20 vehicle may operate over or adjacent to the pipeline provided the equipment is operated in non-vibratory mode. For crossings, vehicle path shall be maintained in a smooth condition, with no breaks in grade for 3 vehicle lengths on each side of the pipeline.

9.2 Equipment Restrictions

In general, no equipment may be used closer than 20 feet from all Metropolitan above-ground structures. The area around the structures should be flagged to prevent equipment encroaching into this zone.

9.3 Vibratory Compaction Equipment

Vibratory compaction equipment may not be used in vibratory mode within 20 feet of the edge of Metropolitan's pipelines.

9.4 Equipment Descriptions

The following information/specifications for each piece of equipment should be included on the list:

- A. A description of the equipment, including the type, manufacturer, model year, and model number. For example, wheel tractor-scraper, 1990 Caterpillar 627E.
- B. The empty and loaded total weight and the corresponding weight distribution. If equipment will be used empty only, it should be clearly stated.
- C. The wheel base (for each axle), tread width (for each axle), and tire footprint (width and length) or the track ground contact (width and length), and track gauge (center to center of track).

10.0 Excavations Close to Metropolitan Facilities

10.1 Shoring Design Submittal

Excavation that impacts Metropolitan's facilities requires that the contractor submit an engineered shoring design to Metropolitan for review and acceptance a minimum of 30 days before the scheduled start of excavation. Excavation may not begin until the shoring design is accepted in writing by Metropolitan.

Shoring design submittals must include all required trenches, pits, and tunnel or jacking operations and related calculations. Before starting the shoring design, the design engineer should consult with Metropolitan regarding Metropolitan's requirements, particularly as to any special procedures that may be required.

10.2 Shoring Design Requirements

Shoring design submittals must be stamped and signed by a California registered civil or structural engineer. The following requirements apply:

- A. The submitted shoring must provide appropriate support for soil adjacent to and under Metropolitan's facilities.
- B. Shoring submittals must include detailed procedures for the installation and removal of the shoring.
- C. Design calculations must follow the Title 8, Chapter 4, Article 6 of the California Code of Regulations (CCR) guidelines. Accepted methods of analysis must be used.
- D. Loads must be in accordance with the CCR guidelines or a soils report by a geotechnical consultant.
- E. All members must be secured to prevent sliding, falling, or kickouts.

Metropolitan's pipelines must be located by potholing under Metropolitan's supervision before the beginning construction. Use of driven piles within 20 feet of the centerline of Metropolitan's pipeline is not allowed. Piles installed in drilled holes must have a minimum 2-foot clearance between Metropolitan's pipeline and the edge of the drilled hole, and a minimum of 1-foot clearance between any part of the shoring and Metropolitan's pipeline.

11.0 Support of Metropolitan Facilities

11.1 Support Design Submittal

If temporary support of a Metropolitan facility is required, the contractor shall submit a support design plan to Metropolitan for review and approval a minimum of 30 days before the scheduled start of work. Work may not begin until the support design is approved in writing by Metropolitan. Before starting design, the design engineer should consult with Metropolitan regarding Metropolitan's requirements.

11.2 Support Design Requirements

Support design submittals must be prepared, stamped, and signed by a California registered civil or structural engineer. The following requirements apply:

- A. Support drawings must include detailed procedures for the installation and removal of the support system.
- B. Design calculations must follow accepted practices, and accepted methods of analysis must be used.
- C. Support designs must show uniform support of Metropolitan's facilities with minimal deflection.
- D. The total weight of the facility must be transferred to the support system before supporting soil is fully excavated.
- E. All members must be secured to prevent sliding, falling, or kickouts.

12.0 Backfill

12.1 Metropolitan Pipeline Not Supported

In areas where a portion of Metropolitan pipeline is not supported during construction, the backfill under and to an elevation of 6 inches above the top of the pipeline must be one-sack minimum cement sand slurry. To prevent adhesion of the slurry to Metropolitan's pipeline, a minimum 6-mil-thick layer of polyethylene sheeting or similar approved sheeting must be placed between the concrete support and the pipeline.

12.2 Metropolitan Pipeline Partially Exposed

In areas where a Metropolitan pipeline is partially exposed during construction, the backfill must be a minimum of 6 inches above the top of the pipeline with sand compacted to minimum 90 percent compaction.

12.3 Metropolitan Cut and Cover Conduit on Colorado River Aqueduct (CRA)

In areas where a Metropolitan cut and cover conduit is exposed, the following guidelines apply:

- A. No vehicle or equipment shall operate over or cross the conduit when the cover is less than 3 feet.
- B. Track-type dozer with a gross vehicle weight of 12,000 lbs or less may be used over the conduit when the cover is a minimum of 3 feet.
- C. Wheeled vehicles with a gross vehicle weight of 8,000 lbs or less may operate over the conduit when the cover is a minimum of 4 feet.
- D. Tracked dozer or wheeled vehicle should be used to push material over the conduit from the side.
- E. Tracked dozer or wheeled vehicle should gradually increase cover on one side of the conduit and then cross the conduit and increase cover on the other side of the conduit. The cover should be increased on one side of the conduit until a maximum of 2 feet of fill has been placed. The cover over the conduit is not allowed to be more than 2 feet higher on one side of the conduit than on the other side.
- F. The cover should be gradually increased over the conduit until the grade elevations have been restored.

13.0 Piles

13.1 Impacts on Metropolitan Pipelines

Pile support for structures could impose lateral, vertical and seismic loads on Metropolitan's pipelines. Since the installation of piles could also cause settlement of Metropolitan pipelines, a settlement and/or lateral deformation study may be required for pile installations within 50 feet of Metropolitan's pipelines. Metropolitan may require additional information per its Geo-technical Guidelines for pile installation. Please contact Metropolitan's Substructures Team for a copy of the Geotechnical Guidelines.

13.2 Permanent Cast-in-place Piles

Permanent cast-in-place piles must be constructed so that down drag forces of the pile do not act on Metropolitan's pipeline. The pile must be designed so that down drag forces are not developed from the ground surface to springline of Metropolitan's pipeline.

Permanent cast-in-place piles shall not be placed closer than 5 feet from the edge of Metropolitan's pipeline. Metropolitan may require additional information per its Geo-technical Guidelines for pile installation. Please contact Metropolitan's Substructures Team for a copy of the Geotechnical Guidelines.

14.0 Protective Slabs for Road Crossings Over Metropolitan Pipelines

Protective slabs must be permanent cast-in-place concrete protective slabs configured in accordance with Drawing SK-1 (See Figure 2 on Page 22).

The moments and shear for the protective slab may be derived from the American Association of State Highway and Transportation Officials (AASHTO). The following requirements apply:

- A. The concrete must be designed to meet the requirements of AASHTO
- B. Load and impact factors must be in accordance with AASHTO. Accepted methods of analysis must be used.
- C. The protective slab design must be stamped and signed by a California registered civil or structural engineer and submitted to Metropolitan with supporting calculations for review and approval.

Existing protective slabs that need to be lengthened can be lengthened without modification, provided the cover and other loading have not been increased.

15.0 Blasting

At least 90 days prior to the start of any drilling for rock excavation blasting, or any blasting in the vicinity of Metropolitan's facilities, a site-specific blasting plan must be submitted to Metropolitan for review and approval. The plan must consist of, but not be limited to, hole diameters, timing sequences, explosive weights, peak particle velocities (PPV) at Metropolitan pipelines/structures, and their distances to blast locations. The PPV must be estimated based on a site-specific power law equation. The power law equation provides the peak particle velocity versus the scaled distance and must be calibrated based on measured values at the site.

16.0 Metropolitan Plan Review Costs, Construction Costs and Billing

16.1 Plan Review Costs

Metropolitan plan reviews requiring 8 labor hours or less are generally performed at no cost to the project proponent. Metropolitan plan reviews requiring more than 8 labor hours must be paid by the project proponent, unless the project proponent has superior rights at the project area. The plan review will include a written response detailing Metropolitan's comments, requirements, and/or approval.

A deposit of funds in the amount of the estimated cost and a signed letter agreement will be required from the project proponent before Metropolitan begins or continues a detailed engineering plan review that exceeds 8 labor hours.

16.2 Cost of Modification of Facilities Performed by Metropolitan

Cost of modification work conducted by Metropolitan will be borne by the project proponent, when Metropolitan has paramount/prior rights at the subject location.

Metropolitan will transmit a cost estimate for the modification work to be performed (when it has paramount/prior rights) and will require that a deposit, in the amount of the estimate, be received before the work will be performed.

16.3 Final Billing

Final billing will be based on the actual costs incurred, including engineering plan review, inspection, materials, construction, and administrative overhead charges calculated in accordance with Metropolitan's standard accounting practices. If the total cost is less than the deposit, a refund will be made; however, if the cost exceeds the deposit, an invoice for the additional amount will be forwarded for payment.

17.0 Street Vacations and Reservation of Easements for Metropolitan

A reservation of an easement is required when all or a portion of a public street where Metropolitan facilities are located is to be vacated. The easement must be equal to the street width being vacated or a minimum 40 feet. The reservation must identify Metropolitan as a "public entity" and not a "public utility," prior to recordation of the vacation or tract map. The reservation of an easement must be submitted to Metropolitan for review prior to final approval.

18.0 Metropolitan Land Use Guidelines

If you are interested in obtaining permission to use Metropolitan land (temporary or long term), a Land Use Form must be completed and submitted to Metropolitan for review and consideration. A nonrefundable processing fee is required to cover Metropolitan's costs for reviewing your request. Land Use Request Forms can be found at:

http://mwdh2o.com/PDF_Doing_Your_Business/4.7.1_Land_Use_Request_form_revised.pdf

The request should be emailed to RealEstateServices@mwdh2o.com, or contact the Real Property Development and Management (RPDM) Group at (213) 217-7750.

After the initial application form has been submitted, Metropolitan may require the following in order to process your request:

- A. A map indicating the location(s) where access is needed, and the location & size (height, width and depth) of any invasive subsurface activity (boreholes, trenches, etc.).
- B. The California Environmental Quality Act (CEQA) document(s) or studies that have been prepared for the project (e.g., initial study, notice of exemption, Environmental Impact Report (EIR), Mitigated Negative Declaration (MND), etc.).
- C. A copy of an ACORD insurance certification naming Metropolitan as an additional insured, or a current copy of a statement of self-insurance.
- D. Confirmation of the legal name of the person(s) or entity(ies) that are to be named as the permittee(s) in the entry permit.
- E. Confirmation of the purpose of the land use.
- F. The name of the person(s) with the authority to sign the documents and any specific signature title block requirements for that person or any other persons required to sign the document (i.e., legal counsel, Board Secretary/Clerk, etc.).
- G. A description of any vehicles that will have access to the property. The exact make or model information is not necessary; however, the general vehicle type, expected maximum dimensions (height, length, width), and a specific maximum weight must be provided.

Land use applications and proposed use of the property must be compatible with Metropolitan's present and/or future use of the property. Any preliminary review of your request by Metropolitan shall not be construed as a promise to grant any property rights for the use of Metropolitan's property.

19.0 Compliance with Environmental Laws and Regulations

As a public agency, Metropolitan is required to comply with all applicable environmental laws and regulations related to the activities it carries out or approves. Consequently, project plans, maps, and other information must be reviewed to determine Metropolitan's obligations pursuant to state and federal environmental laws and regulations, including, but not limited to:

- A. California Environmental Quality Act (CEQA) (Public Resources Code 21000-21177) and the State CEQA Guidelines (California Code of Regulations, Title 14, Division 6, Chapter 3, Sections 1500-15387)
- B. Federal Endangered Species Act (ESA) of 1973, 16 U.S.C. §§ 1531, et seq.
- C. California Fish and Game Code Sections 2050-2069 (California ESA)
- D. California Fish and Game Code Section 1602
- E. California Fish and Game Code Sections 3511, 4700, 5050 and 5515 (California fully protected species)
- F. Federal Migratory Bird Treaty Act (MBTA), 16 U.S.C. §§ 703-712
- G. Federal Clean Water Act (including but not limited to Sections 404 and 401) 33 U.S.C. §§ 1342, 1344)

- H. Porter Cologne Water Quality Control Act of 1969, California Water Code §§ 13000-14076.
- I. Title 22, California Code of Regulations, Chapter 16 (California Waterworks Standards), Section 64572 (Water Main Separation)

Metropolitan may require the project applicant to pay for any environmental review, compliance and/or mitigation costs incurred to satisfy such legal obligations.

20.0 Paramount Rights / Metropolitan's Rights within Existing Rights-of-Way

Facilities constructed within Metropolitan's rights-of-way shall be subject to the paramount right of Metropolitan to use its rights-of-way for the purpose for which they were acquired. If at any time Metropolitan or its assigns should, in the exercise of their rights, find it necessary to remove or relocate any facilities from its rights-of-way, such removal and replacement or relocation shall be at the expense of the owner of the facility.

21.0 Disclaimer and Information Accuracy

Metropolitan assumes no responsibility for the accuracy of the substructure information herein provided. The user assumes responsibility for verifying substructure locations before excavating and assumes all liability for damage to Metropolitan's facilities as a result of such excavation. Additionally, the user is cautioned to conduct surveys and other field investigations as you may deem prudent, to assure that your project plans are correct. The relevant representative from Metropolitan must be called at least two working days, before any work activity in proximity to Metropolitan's facilities.

It generally takes 30 days to review project plans and provide written responses. Metropolitan reserves the right to modify requirements based on case-specific issues and regulatory developments.

Table 1: General Guidelines for Pipeline Separation between Metropolitan’s Pipeline¹ and Sanitary Sewer² or Hazardous Fluid Pipeline³

<p><u>Pipeline Crossings</u></p>	<p>Metropolitan requires that sanitary sewer and hazardous fluid pipelines that cross Metropolitan’s pipelines have special pipe construction (no joints) and secondary containment⁴. This is required for the full width of Metropolitan’s rights-of-way or within 10 feet tangent to the outer edges of Metropolitan’s pipeline within public streets. Additionally, sanitary sewer and hazardous fluid pipelines crossing Metropolitan’s pipelines must be perpendicular and maintain a minimum 1-foot vertical clearance between the top and the bottom of Metropolitan’s pipeline and the pipe casing.</p> <p>These requirements apply to all sanitary sewer crossings regardless if the sanitary sewer main is located below or above Metropolitan’s pipeline.</p>
<p><u>Parallel Pipeline</u></p>	<p>Metropolitan generally does not permit the installation of longitudinal pipelines along its rights-of-way. Within public streets, Metropolitan requires that all parallel sanitary sewer, hazardous fluid pipelines and/or non-potable utilities be located a minimum of 10 feet from the outside edges of Metropolitan’s pipelines. When 10-foot horizontal separation criteria cannot be met, longitudinal pipelines require special pipe construction (no joints) and secondary containment⁴.</p>
<p><u>Sewer Manhole</u></p>	<p>Sanitary sewer manholes are not allowed within Metropolitan’s rights-of-way. Within public streets, Metropolitan requests manholes parallel to its pipeline be located a minimum of 10 feet from the outside edges of its pipelines. When 10 foot horizontal separation criteria cannot be met, the structure must have secondary containment⁵.</p>

Notes:

¹ Separation distances are measured from the outer edges of each pipe.

² Sanitary sewer requirements apply to all recycled water treated to less than disinfected tertiary recycled water (disinfected secondary recycled water or less). Recycled water definitions are included in Title 22, California Code of Regulations, Chapter 3 (Water Recycling Criteria), Section 60301.

³ Hazardous fluids include e.g., oil, fuels, chemicals, industrial wastes, wastewater sludge, etc.

⁴ Secondary Containment for Pipeline - Secondary containment consists of a continuous pipeline sleeve (no joints). Examples acceptable to Metropolitan include welded steel pipe with grout in annular space and cathodic protection (unless coated with non-conductive material) and High Density Polyethylene (HDPE) pipe with fusion-welded joints.

⁵ Secondary Containment for Structures – Secondary containment consists of external HDPE liner or other approved method.

Table 2: General Guidelines for Pipeline Separation between Metropolitan’s Pipeline¹ and Storm Drain and/or Disinfected Tertiary Recycled Water²

<p><u>Pipeline Crossings</u></p>	<p>Metropolitan requires crossing pipelines to be special pipe construction (no joints) or have secondary containment³ within 10-feet tangent to the outer edges of Metropolitan’s pipeline. Additionally, pipelines crossing Metropolitan’s pipelines must be perpendicular and maintain a minimum 1-foot vertical clearance.</p>
<p><u>Parallel Pipeline</u></p>	<p>Metropolitan generally does not permit the installation of longitudinal pipelines along its rights-of-way. Within public streets, Metropolitan requests that all parallel pipelines be located a minimum of 10 feet from the outside edges of Metropolitan’s pipelines. When 10-foot horizontal separation criteria cannot be met, special pipe construction (no joints) or secondary containment³ are required.</p>
<p><u>Storm Drain Manhole</u></p>	<p>Permanent utility structures (e.g., manhole, catch basin, inlets) are not allowed within Metropolitan’s rights-of-way. Within public streets, Metropolitan requests all structures parallel to its pipeline be located a minimum of 10 feet from the outside edges of its pipelines. When 10 foot horizontal separation criteria cannot be met, the structure must have secondary containment⁴.</p>

Notes:

¹ Separation distances are measured from the outer edges of each pipe.

² Disinfected tertiary recycled water as defined in Title 22, California Code of Regulations, Chapter 3 (Water Recycling Criteria), Section 60301.

³ Secondary Containment for Pipeline - Secondary containment consists of a continuous pipeline sleeve (no joints). Examples acceptable to Metropolitan include welded steel pipe with grout in annular space and cathodic protection (unless coated with non-conductive material) and High Density Polyethylene (HDPE) pipe with fusion-welded joints.

⁴ Secondary Containment for Structures – Secondary containment consists of external HDPE liner or other approved method.

Table 3: General Guidelines for Pipeline Separation¹ between Metropolitan’s Pipeline and Recycled Water^{2,4} Irrigations

<p>Pressurized recycled irrigation mainlines</p>	<ul style="list-style-type: none"> • Crossings - must be perpendicular and maintain a minimum 1-foot vertical clearance. Crossing pressurized recycled irrigation mainlines must be special pipe construction (no joints) or have secondary containment³ within 10-feet tangent to the outer edges of Metropolitan’s pipeline. • Longitudinal - must maintain a minimum 10-foot horizontal separation and route along the perimeter of Metropolitan’s rights-of-way where possible.
<p>Intermittently Energized Recycled Water Irrigation System Components</p>	<ul style="list-style-type: none"> • Crossings - must be perpendicular and maintain a minimum 1-foot vertical clearance. Crossing irrigation laterals within 5-feet tangent to the outer edges of Metropolitan’s pipeline must be special pipe construction (no joints) or have secondary containment³. • Longitudinal – must maintain a minimum 5-foot horizontal separation between all intermittently energized recycled water irrigation system components (e.g. irrigation lateral lines, control valves, rotors) and the outer edges of Metropolitan’s pipeline. Longitudinal irrigation laterals within 5-feet tangent to the outer edges of Metropolitan’s pipeline must be special pipe construction (no joints) or have secondary containment³.
<p>Irrigation Structures</p>	<p>Irrigation structures such as meters, pumps, control valves, etc. must be located outside of Metropolitan’s rights-of-way.</p>
<p>Irrigation spray rotors near Metropolitan’s aboveground facilities</p>	<p>Irrigation spray rotors must be located a minimum of 20-foot from any Metropolitan above ground structures with the spray direction away from these structures. These rotors should be routinely maintained and adjusted as necessary to ensure no over-spray into 20-foot clear zones.</p>
<p>Irrigations near open canals and aqueducts</p>	<p>Irrigation with recycled water near open canals and aqueducts will require a setback distance to be determined based on site-specific conditions. Runoff of recycled water must be contained within an approved use area and not impact Metropolitan facilities. Appropriate setbacks must also be in place to prevent overspray of recycled water impacting Metropolitan’s facilities.</p>

Notes:

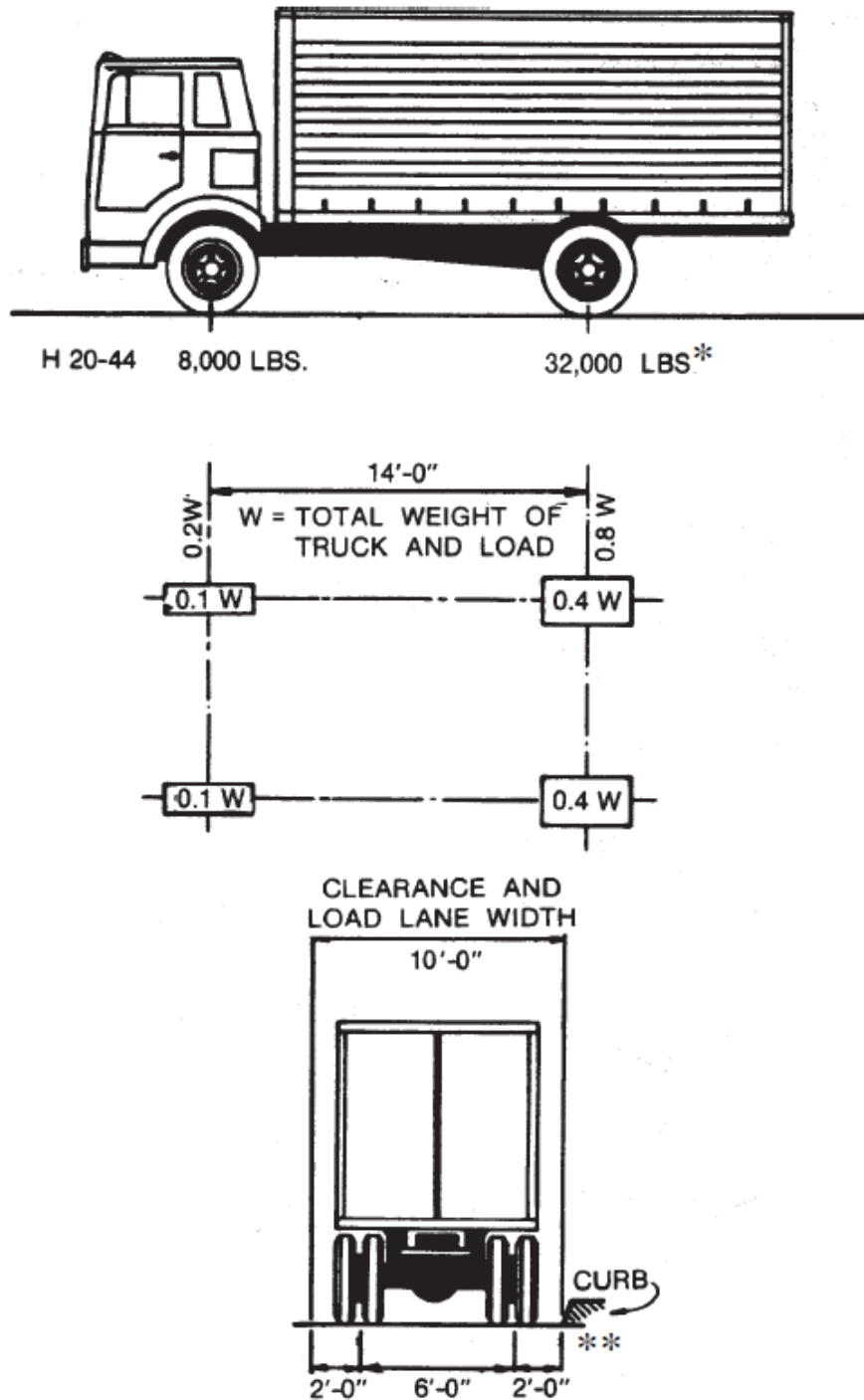
¹ Separation distances are measured from the outer edges of each pipe.

² Requirements for recycled water irrigation apply to all levels of treatment of recycled water for non-potable uses. Recycled water definitions are included in Title 22, California Code of Regulations, Chapter 3 (Water Recycling Criteria), Section 60301.

³ Secondary Containment for Pipeline - Secondary containment consists of a continuous pipeline sleeve (no joints). Examples acceptable to Metropolitan include welded steel pipe with grout in annular space and cathodic protection (unless coated with non-conductive material) and High Density Polyethylene (HDPE) pipe with fusion-welded joints.

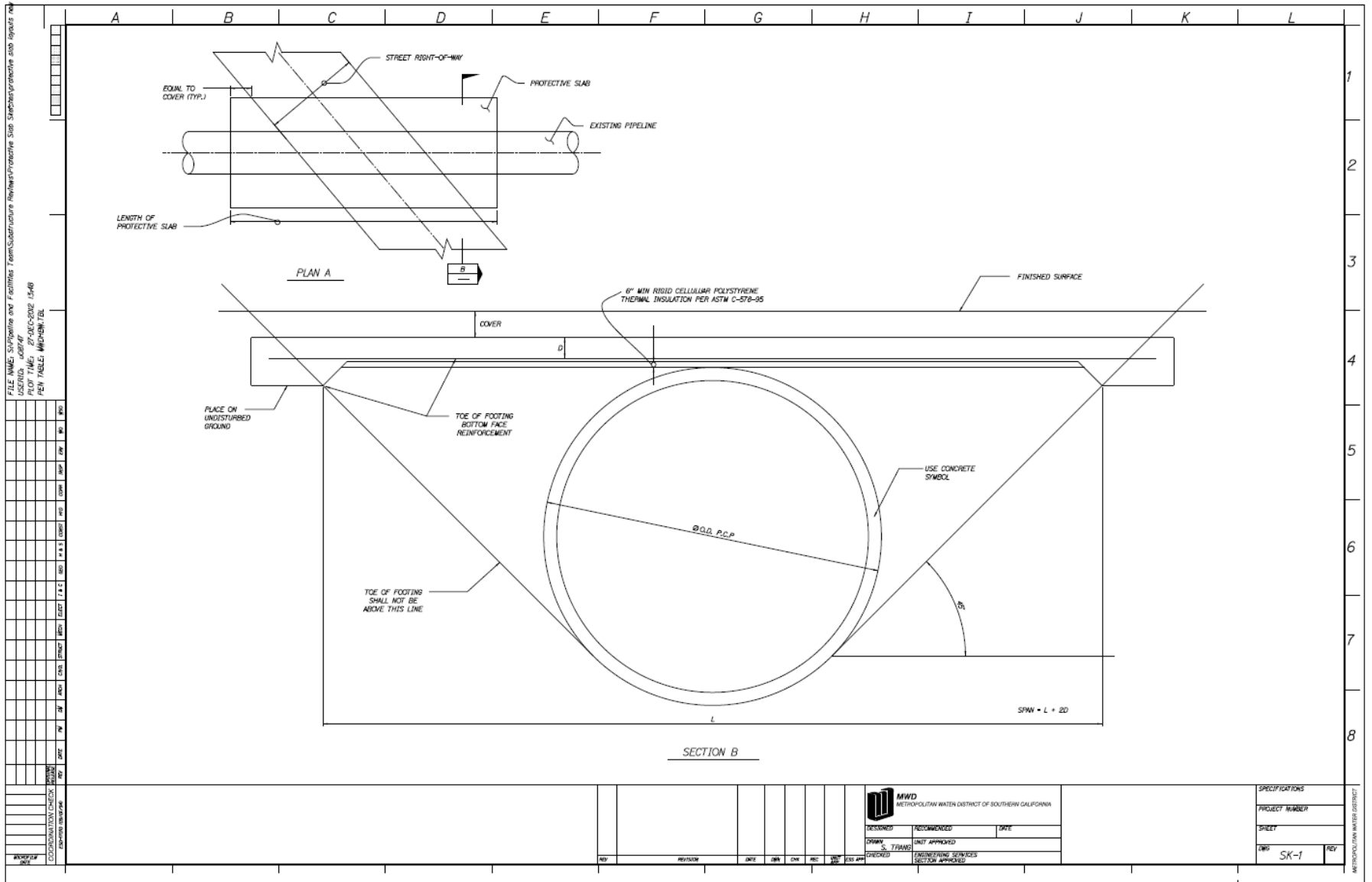
⁴ Irrigation with recycled water shall not be applied directly above Metropolitan’s treated water pipelines.

Figure 1: AASHTO H-20 Loading



Note: The H loadings consist of a two-axle truck or the corresponding lane loadings as illustrated above. The H loadings are designated "H" followed by a number indicating the gross weight in tons of the standard truck.

Figure 2: Drawing SK-1



**1a. Pro Forma Owner's Policy of Title Insurance
(see Chapter 2, Response to Comment 2.2)**



PRO FORMA OWNER'S POLICY OF TITLE INSURANCE

Issued by

Fidelity National Title Insurance Company

Any notice of claim and any other notice or statement in writing required to be given the Company under this Policy must be given to the Company at the address shown in Section 18 of the Conditions.

COVERED RISKS

SUBJECT TO THE EXCLUSIONS FROM COVERAGE, THE EXCEPTIONS FROM COVERAGE CONTAINED IN SCHEDULE B, AND THE CONDITIONS, FIDELITY NATIONAL TITLE INSURANCE COMPANY, a Florida corporation (the "Company") insures, as of Date of Policy and, to the extent stated in Covered Risks 9 and 10, after Date of Policy, against loss or damage, not exceeding the Amount of Insurance, sustained or incurred by the Insured by reason of:

1. Title being vested other than as stated in Schedule A.
2. Any defect in or lien or encumbrance on the Title. This Covered Risk includes but is not limited to insurance against loss from
 - (a) A defect in the Title caused by
 - (i) forgery, fraud, undue influence, duress, incompetency, incapacity, or impersonation;
 - (ii) failure of any person or Entity to have authorized a transfer or conveyance;
 - (iii) a document affecting Title not properly created, executed, witnessed, sealed, acknowledged, notarized, or delivered;
 - (iv) failure to perform those acts necessary to create a document by electronic means authorized by law;
 - (v) a document executed under a falsified, expired, or otherwise invalid power of attorney;
 - (vi) a document not properly filed, recorded, or indexed in the Public Records including failure to perform those acts by electronic means authorized by law; or
 - (vii) a defective judicial or administrative proceeding.
 - (b) The lien of real estate taxes or assessments imposed on the Title by a governmental authority due or payable, but unpaid.
 - (c) Any encroachment, encumbrance, violation, variation, or adverse circumstance affecting the Title that would be disclosed by an accurate and complete land survey of the Land. The term "encroachment" includes encroachments of existing improvements located on the Land onto adjoining land, and encroachments onto the Land of existing improvements located on adjoining land.
3. Unmarketable Title.
4. No right of access to and from the Land.



5. The violation or enforcement of any law, ordinance, permit, or governmental regulation (including those relating to building and zoning) restricting, regulating, prohibiting, or relating to
 - (a) the occupancy, use, or enjoyment of the Land;
 - (b) the character, dimensions, or location of any improvement erected on the Land;
 - (c) the subdivision of land; or
 - (d) environmental protectionif a notice, describing any part of the Land, is recorded in the Public Records setting forth the violation or intention to enforce, but only to the extent of the violation or enforcement referred to in that notice.
6. An enforcement action based on the exercise of a governmental police power not covered by Covered Risk 5 if a notice of the enforcement action, describing any part of the Land, is recorded in the Public Records, but only to the extent of the enforcement referred to in that notice.
7. The exercise of the rights of eminent domain if a notice of the exercise, describing any part of the Land, is recorded in the Public Records.
8. Any taking by a governmental body that has occurred and is binding on the rights of a purchaser for value without Knowledge.
9. Title being vested other than as stated Schedule A or being defective
 - (a) as a result of the avoidance in whole or in part, or from a court order providing an alternative remedy, of a transfer of all or any part of the title to or any interest in the Land occurring prior to the transaction vesting Title as shown in Schedule A because that prior transfer constituted a fraudulent or preferential transfer under federal bankruptcy, state insolvency, or similar creditors' rights laws; or
 - (b) because the instrument of transfer vesting Title as shown in Schedule A constitutes a preferential transfer under federal bankruptcy, state insolvency, or similar creditors' rights laws by reason of the failure of its recording in the Public Records
 - (i) to be timely, or
 - (ii) to impart notice of its existence to a purchaser for value or to a judgment or lien creditor.
10. Any defect in or lien or encumbrance on the Title or other matter included in Covered Risks 1 through 9 that has been created or attached or has been filed or recorded in the Public Records subsequent to Date of Policy and prior to the recording of the deed or other instrument of transfer in the Public Records that vests Title as shown in Schedule A.

The Company will also pay the costs, attorneys' fees, and expenses incurred in defense of any matter insured against by this Policy, but only to the extent provided in the Conditions.

IN WITNESS WHEREOF, FIDELITY NATIONAL TITLE INSURANCE COMPANY has caused this policy to be signed and sealed by its duly authorized officers.

Fidelity National Title Insurance Company

Countersigned by:

Pro Forma Specimen

Authorized Signature

This is a Pro Forma Policy. It does not reflect the present state of the Title and is not a commitment to (i) insure the Title or (ii) issue any of the attached endorsements. Any such commitment must be an express written undertaking on appropriate forms of the Company.

EXCLUSIONS FROM COVERAGE

The following matters are expressly excluded from the coverage of this policy, and the Company will not pay loss or damage, costs, attorneys' fees, or expenses that arise by reason of:

1. (a) Any law, ordinance, permit, or governmental regulation (including those relating to building and zoning) restricting, regulating, prohibiting, or relating to
 - (i) the occupancy, use, or enjoyment of the Land;
 - (ii) the character, dimensions or location of any improvement erected on the Land;
 - (iii) the subdivision of land; or
 - (iv) environmental protection;
 or the effect of any violation of these laws, ordinances, or governmental regulations. This Exclusion 1(a) does not modify or limit the coverage provided under Covered Risk 5.
- (b) Any governmental police power. This Exclusion 1(b) does not modify or limit the coverage provided under Covered Risk 6.
2. Rights of eminent domain. This Exclusion does not modify or limit the coverage provided under Covered Risk 7 or 8.
3. Defects, liens, encumbrances, adverse claims, or other matters:
 - (a) created, suffered, assumed, or agreed to by the Insured Claimant;
 - (b) not Known to the Company, not recorded in the Public Records at Date of Policy, but Known to the Insured Claimant and not disclosed in writing to the Company by the Insured Claimant prior to the date the Insured Claimant became an Insured under this policy;
 - (c) resulting in no loss or damage to the Insured Claimant;
 - (d) attaching or created subsequent to Date of Policy (however, this does not modify or limit the coverage provided under Covered Risk 9 and 10); or
 - (e) resulting in loss or damage that would not have been sustained if the Insured Claimant had paid value for the Title.
4. Any claim, by reason of the operation of federal bankruptcy, state insolvency, or similar creditors' rights laws, that the transaction vesting the Title as shown in Schedule A, is
 - (a) a fraudulent conveyance or fraudulent transfer; or
 - (b) a preferential transfer for any reason not stated in Covered Risk 9 of this policy.
5. Any lien on the Title for real estate taxes or assessments imposed by governmental authority and created or attaching between Date of Policy and the date of recording of the deed or other instrument of transfer in the Public Records that vests Title as shown in Schedule A.

CONDITIONS

1. DEFINITION OF TERMS

The following terms when used in this policy mean:

(a) "Amount of Insurance": The amount stated in Schedule A, as may be increased or decreased by endorsement to this policy, increased by Section 8(b), or decreased by Sections 10 and 11 of these Conditions.

(b) "Date of Policy": The date designated as "Date of Policy" in Schedule A.

(c) "Entity": A corporation, partnership, trust, limited liability company, or other similar legal entity.

(d) "Insured": The Insured named in Schedule A.

(i) The term "Insured" also includes

(A) successors to the Title of the Insured by operation of law as distinguished from purchase, including heirs, devisees, survivors, personal representatives, or next of kin;

(B) successors to an Insured by dissolution, merger, consolidation, distribution, or reorganization;

(C) successors to an Insured by its conversion to another kind of Entity;

(D) a grantee of an Insured under a deed delivered without payment of actual valuable consideration conveying the Title

(1) if the stock, shares, memberships, or other equity interests of the grantee are wholly-owned by the named Insured,

(2) if the grantee wholly owns the named Insured,

(3) if the grantee is wholly-owned by an affiliated Entity of the named Insured, provided the affiliated Entity and the 27306 (6/06)

named Insured are both wholly-owned by the same person or Entity, or

(4) if the grantee is a trustee or beneficiary of a trust created by a written instrument established by the Insured named in Schedule A for estate planning purposes.

(ii) With regard to (A), (B), (C), and (D) reserving, however, all rights and defenses as to any successor that the Company would have had against any predecessor Insured.

(e) "Insured Claimant": An Insured claiming loss or damage.

(f) "Knowledge" or "Known": Actual knowledge, not constructive knowledge or notice that may be imputed to an Insured by reason of the Public Records or any other records that impart constructive notice of matters affecting the Title.

(g) "Land": The land described in Schedule A, and affixed improvements that by law constitute real property. The term "Land" does not include any property beyond the lines of the area described in Schedule A, nor any right, title, interest, estate, or easement in abutting streets, roads, avenues, alleys, lanes, ways, or waterways, but this does not modify or limit the extent that a right of access to and from the Land is insured by this policy.

(h) "Mortgage": Mortgage, deed of trust, trust deed, or other security instrument, including one evidenced by electronic means authorized by law.

(i) "Public Records": Records established under state statutes at Date of Policy for the purpose of imparting constructive notice of matters relating to real property to purchasers for value and without Knowledge. With respect

to Covered Risk 5(d), "Public Records" shall also include environmental protection liens filed in the records of the clerk of the United States District Court for the district where the Land is located.

(j) "Title": The estate or interest described in Schedule A.

(k) "Unmarketable Title": Title affected by an alleged or apparent matter that would permit a prospective purchaser or lessee of the Title or lender on the Title to be released from the obligation to purchase, lease, or lend if there is a contractual condition requiring the delivery of marketable title.

2. CONTINUATION OF INSURANCE

The coverage of this policy shall continue in force as of Date of Policy in favor of an Insured, but only so long as the Insured retains an estate or interest in the Land, or holds an obligation secured by a purchase money Mortgage given by a purchaser from the Insured, or only so long as the Insured shall have liability by reason of warranties in any transfer or conveyance of the Title. This policy shall not continue in force in favor of any purchaser from the Insured of either (i) an estate or interest in the Land, or (ii) an obligation secured by a purchase money Mortgage given to the Insured.

3. NOTICE OF CLAIM TO BE GIVEN BY INSURED CLAIMANT

The Insured shall notify the Company promptly in writing (i) in case of any litigation as set forth in Section 5(a) of these Conditions, (ii) in case Knowledge shall come to an Insured hereunder of any claim of title or interest that is adverse to the Title, as insured, and that might cause loss or damage for which the Company may be liable by virtue of this policy, or (iii) if the Title, as insured, is rejected as Unmarketable

ALTA Owner's Policy (6/17/06)



Title. If the Company is prejudiced by the failure of the Insured Claimant to provide prompt notice, the Company's liability to the Insured Claimant under the policy shall be reduced to the extent of the prejudice.

4. PROOF OF LOSS

In the event the Company is unable to determine the amount of loss or damage, the Company may, at its option, require as a condition of payment that the Insured Claimant furnish a signed proof of loss. The proof of loss must describe the defect, lien, encumbrance, or other matter insured against by this policy that constitutes the basis of loss or damage and shall state, to the extent possible, the basis of calculating the amount of the loss or damage.

5. DEFENSE AND PROSECUTION OF ACTIONS

(a) Upon written request by the Insured, and subject to the options contained in Section 7 of these Conditions, the Company, at its own cost and without unreasonable delay, shall provide for the defense of an Insured in litigation in which any third party asserts a claim covered by this policy adverse to the Insured. This obligation is limited to only those stated causes of action alleging matters insured against by this policy. The Company shall have the right to select counsel of its choice (subject to the right of the Insured to object for reasonable cause) to represent the Insured as to those stated causes of action. It shall not be liable for and will not pay the fees of any other counsel. The Company will not pay any fees, costs, or expenses incurred by the Insured in the defense of those causes of action that allege matters not insured against by this policy.

(b) The Company shall have the right, in addition to the options contained in Section 7 of these Conditions, at its own cost, to institute and prosecute any action or proceeding or to do any other act that in its opinion may be necessary or desirable to establish the Title, as insured, or to prevent or reduce loss or damage to the Insured. The Company may take any appropriate action under the terms of this policy, whether or not it shall be liable to the Insured. The exercise of these rights shall not be an admission of liability or waiver of any provision of this policy. If the Company exercises its rights under this subsection, it must do so diligently.

(c) Whenever the Company brings an action or asserts a defense as required or permitted by this policy, the Company may pursue the litigation to a final determination by a court of competent jurisdiction, and it expressly reserves the right, in its sole discretion, to appeal from any adverse judgment or order.

6. DUTY OF INSURED CLAIMANT TO COOPERATE

(a) In all cases where this policy permits or requires the Company to prosecute or provide for the defense of any action or proceeding and any appeals, the Insured shall secure to the Company the right to so prosecute or provide defense in the action or proceeding, including the right to use, at its option, the name of the Insured for this purpose. Whenever requested 27306 (6/06)

by the Company, the Insured, at the Company's expense, shall give the Company all reasonable aid (i) in securing evidence, obtaining witnesses, prosecuting or defending the action or proceeding, or effecting settlement, and (ii) in any other lawful act that in the opinion of the Company may be necessary or desirable to establish the Title or any other matter as insured. If the Company is prejudiced by the failure of the Insured to furnish the required cooperation, the Company's obligations to the Insured under the policy shall terminate, including any liability or obligation to defend, prosecute, or continue any litigation, with regard to the matter or matters requiring such cooperation.

(b) The Company may reasonably require the Insured Claimant to submit to examination under oath by any authorized representative of the Company and to produce for examination, inspection, and copying, at such reasonable times and places as may be designated by the authorized representative of the Company, all records, in whatever medium maintained, including books, ledgers, checks, memoranda, correspondence, reports, e-mails, disks, tapes, and videos whether bearing a date before or after Date of Policy, that reasonably pertain to the loss or damage. Further, if requested by any authorized representative of the Company, the Insured Claimant shall grant its permission, in writing, for any authorized representative of the Company to examine, inspect, and copy all of these records in the custody or control of a third party that reasonably pertain to the loss or damage. All information designated as confidential by the Insured Claimant provided to the Company pursuant to this Section shall not be disclosed to others unless, in the reasonable judgment of the Company, it is necessary in the administration of the claim. Failure of the Insured Claimant to submit for examination under oath, produce any reasonably requested information, or grant permission to secure reasonably necessary information from third parties as required in this subsection, unless prohibited by law or governmental regulation, shall terminate any liability of the Company under this policy as to that claim.

7. OPTIONS TO PAY OR OTHERWISE SETTLE CLAIMS; TERMINATION OF LIABILITY

In case of a claim under this policy, the Company shall have the following additional options:

(a) To Pay or Tender Payment of the Amount of Insurance.

To pay or tender payment of the Amount of Insurance under this policy together with any costs, attorneys' fees, and expenses incurred by the Insured Claimant that were authorized by the Company up to the time of payment or tender of payment and that the Company is obligated to pay.

Upon the exercise by the Company of this option, all liability and obligations of the Company to the Insured under this policy, other than to make the payment required in this

subsection, shall terminate, including any liability or obligation to defend, prosecute, or continue any litigation.

(b) To Pay or Otherwise Settle With Parties Other Than the Insured or With the Insured Claimant.

(i) To pay or otherwise settle with other parties for or in the name of an Insured Claimant any claim insured against under this policy. In addition, the Company will pay any costs, attorneys' fees, and expenses incurred by the Insured Claimant that were authorized by the Company up to the time of payment and that the Company is obligated to pay; or

(ii) To pay or otherwise settle with the Insured Claimant the loss or damage provided for under this policy, together with any costs, attorneys' fees, and expenses incurred by the Insured Claimant that were authorized by the Company up to the time of payment and that the Company is obligated to pay.

Upon the exercise by the Company of either of the options provided for in subsections (b)(i) or (ii), the Company's obligations to the Insured under this policy for the claimed loss or damage, other than the payments required to be made, shall terminate, including any liability or obligation to defend, prosecute, or continue any litigation.

8. DETERMINATION AND EXTENT OF LIABILITY

This policy is a contract of indemnity against actual monetary loss or damage sustained or incurred by the Insured Claimant who has suffered loss or damage by reason of matters insured against by this policy.

(a) The extent of liability of the Company for loss or damage under this policy shall not exceed the lesser of

- (i) the Amount of Insurance; or
- (ii) the difference between the value of the Title as insured and the value of the Title subject to the risk insured against by this policy.

(b) If the Company pursues its rights under Section 5 of these Conditions and is unsuccessful in establishing the Title, as insured,

- (i) the Amount of Insurance shall be increased by 10%, and
- (ii) the Insured Claimant shall have

the right to have the loss or damage determined either as of the date the claim was made by the Insured Claimant or as of the date it is settled and paid.

(c) In addition to the extent of liability under (a) and (b), the Company will also pay those costs, attorneys' fees, and expenses incurred in accordance with Sections 5 and 7 of these Conditions.

9. LIMITATION OF LIABILITY

(a) If the Company establishes the Title, or removes the alleged defect, lien or encumbrance, or cures the lack of a right of access to or from the Land, or cures the claim of Unmarketable Title, all as insured, in a reasonably diligent manner by any method, including litigation and the completion of any appeals, it shall have fully performed its

ALTA Owner's Policy (6/17/06)



obligations with respect to that matter and shall not be liable for any loss or damage caused to the Insured.

(b) In the event of any litigation, including litigation by the Company or with the Company's consent, the Company shall have no liability for loss or damage until there has been a final determination by a court of competent jurisdiction, and disposition of all appeals, adverse to the Title, as insured.

(c) The Company shall not be liable for loss or damage to the Insured for liability voluntarily assumed by the Insured in settling any claim or suit without the prior written consent of the Company.

10. REDUCTION OF INSURANCE; REDUCTION OR TERMINATION OF LIABILITY

All payments under this policy, except payments made for costs, attorneys' fees, and expenses, shall reduce the Amount of Insurance by the amount of the payment.

11. LIABILITY NONCUMULATIVE

The Amount of Insurance shall be reduced by any amount the Company pays under any policy insuring a Mortgage to which exception is taken in Schedule B or to which the Insured has agreed, assumed, or taken subject, or which is executed by an Insured after Date of Policy and which is a charge or lien on the Title, and the amount so paid shall be deemed a payment to the Insured under this policy.

12. PAYMENT OF LOSS

When liability and the extent of loss or damage have been definitely fixed in accordance with these Conditions, the payment shall be made within 30 days.

13. RIGHTS OF RECOVERY UPON PAYMENT OR SETTLEMENT

(a) Whenever the Company shall have settled and paid a claim under this policy, it shall be subrogated and entitled to the rights of the Insured Claimant in the Title and all other rights and remedies in respect to the claim that the Insured Claimant has against any person or property, to the extent of the amount of any loss, costs, attorneys' fees, and expenses paid by the Company. If requested by the Company, the Insured Claimant shall execute documents to evidence the transfer to the Company of these rights and remedies. The Insured Claimant shall permit the Company to sue, compromise, or

settle in the name of the Insured Claimant and to use the name of the Insured Claimant in any transaction or litigation involving these rights and remedies.

If a payment on account of a claim does not fully cover the loss of the Insured Claimant, the Company shall defer the exercise of its right to recover until after the Insured Claimant shall have recovered its loss.

(b) The Company's right of subrogation includes the rights of the Insured to indemnities, guaranties, other policies of insurance, or bonds, notwithstanding any terms or conditions contained in those instruments that address subrogation rights.

14. ARBITRATION

Either the Company or the Insured may demand that the claim or controversy shall be submitted to arbitration pursuant to the Title Insurance Arbitration Rules of the American Land Title Association ("Rules"). Except as provided in the Rules, there shall be no joinder or consolidation with claims or controversies of other persons. Arbitrable matters may include, but are not limited to, any controversy or claim between the Company and the Insured arising out of or relating to this policy, any service in connection with its issuance or the breach of a policy provision, or to any other controversy or claim arising out of the transaction giving rise to this policy. All arbitrable matters when the Amount of Insurance is \$2,000,000 or less shall be arbitrated at the option of either the Company or the Insured. All arbitrable matters when the Amount of Insurance is in excess of \$2,000,000 shall be arbitrated only when agreed to by both the Company and the Insured. Arbitration pursuant to this policy and under the Rules shall be binding upon the parties. Judgment upon the award rendered by the Arbitrator(s) may be entered in any court of competent jurisdiction.

15. LIABILITY LIMITED TO THIS POLICY; POLICY ENTIRE CONTRACT

(a) This policy together with all endorsements, if any, attached to it by the Company is the entire policy and contract between the Insured and the Company. In interpreting any provision of this policy, this policy shall be construed as a whole.

(b) Any claim of loss or damage that arises out of the status of the Title or by any

action asserting such claim shall be restricted to this policy.

(c) Any amendment of or endorsement to this policy must be in writing and authenticated by an authorized person, or expressly incorporated by Schedule A of this policy.

(d) Each endorsement to this policy issued at any time is made a part of this policy and is subject to all of its terms and provisions. Except as the endorsement expressly states, it does not (i) modify any of the terms and provisions of the policy, (ii) modify any prior endorsement, (iii) extend the Date of Policy, or (iv) increase the Amount of Insurance.

16. SEVERABILITY

In the event any provision of this policy, in whole or in part, is held invalid or unenforceable under applicable law, the policy shall be deemed not to include that provision or such part held to be invalid, but all other provisions shall remain in full force and effect.

17. CHOICE OF LAW; FORUM

(a) Choice of Law: The Insured acknowledges the Company has underwritten the risks covered by this policy and determined the premium charged therefor in reliance upon the law affecting interests in real property and applicable to the interpretation, rights, remedies, or enforcement of policies of title insurance of the jurisdiction where the Land is located.

Therefore, the court or an arbitrator shall apply the law of the jurisdiction where the Land is located to determine the validity of claims against the Title that are adverse to the Insured and to interpret and enforce the terms of this policy. In neither case shall the court or arbitrator apply its conflicts of law principles to determine the applicable law.

(b) Choice of Forum: Any litigation or other proceeding brought by the Insured against the Company must be filed only in a state or federal court within the United States of America or its territories having appropriate jurisdiction.

18. NOTICES, WHERE SENT

Any notice of claim and any other notice or statement in writing required to be given to the Company under this policy must be given to the Company at Fidelity National Title Insurance Company, Attn: Claims Department, Post Office Box 45023, Jacksonville, Florida 32232-5023.

Fidelity National Title Insurance Company

SCHEDULE A

This is a Pro Forma Policy. It does not reflect the present state of the Title and is not a commitment to (i) insure the Title or (ii) issue any of the attached endorsements. Any such commitment must be an express written undertaking on appropriate forms of the Company.

Name and Address of Title Insurance Company: **Fidelity National Title Company, 4400 MacArthur Blvd., Suite 200, Newport Beach, CA 92660**

Policy No.: **Pro Forma-CA-FBDO-IMP-27306-1-21-30067102**

Order No.: **30067102-997-MAT-TC1**

Address Reference: **5770 North Industrial Parkway, San Bernardino, CA 92407**

Amount of Insurance: **\$10,550,000.00**

Premium: **PRO FORMA**

Date of Policy: **Date & Time of Recording**

1. Name of Insured:

TBD

2. The estate or interest in the Land that is insured by this policy is:

A Fee as to Parcel(s) 1 and 3
Easement(s) more fully described below as to Parcel(s) 2

3. Title is vested in:

TBD

4. The Land referred to in this policy is described as follows:

See Exhibit A attached hereto and made a part hereof.

THIS POLICY VALID ONLY IF SCHEDULE B IS ATTACHED



EXHIBIT A

LEGAL DESCRIPTION

THE LAND REFERRED TO HEREIN BELOW IS SITUATED IN THE CITY OF SAN BERNARDINO, IN THE COUNTY OF SAN BERNARDINO, STATE OF CALIFORNIA, AND IS DESCRIBED AS FOLLOWS:

PARCEL 1:

ALL THAT PORTION OF SECTION 12, TOWNSHIP 1 NORTH, RANGE 5 WEST, SAN BERNARDINO BASE AND MERIDIAN, DESCRIBED AS FOLLOWS:

BEGINNING AT THE INTERSECTION OF THE NORTH RIGHT OF WAY LINE OF THE ATCHISON, TOPEKA AND SANTA FE RAILROAD AND THE CENTER LINE OF PALM AVENUE, 40 FEET WIDE, AS SHOWN ON IRVINGTON LAND AND WATER COMPANY SUBDIVISION, AS PER PLAT RECORDED IN BOOK 3 OF MAPS, PAGE 9, RECORDS OF SAID COUNTY; THENCE SOUTH 38° 54' 36" EAST, 523.50 FEET ALONG THE AFOREMENTIONED ATCHISON, TOPEKA AND SANTA FE RAILROAD RIGHT OF WAY LINE TO A POINT, SAID POINT BEING THE TRUE POINT OF BEGINNING; THENCE NORTH 27° 15' 41" EAST, 399.43 FEET TO A POINT, WHICH POINT IS IN THE SOUTH RIGHT OF WAY LINE TO AN 80 FOOT ROADWAY EASEMENT DESCRIBED IN THE EASEMENT DEED FROM SAN BERNARDINO ASSOCIATES, RECORDED APRIL 16, 1965 IN BOOK 6372, PAGE 694, OFFICIAL RECORDS; THENCE SOUTH 38° 55' 29" EAST, 596.43 FEET ALONG SAID SOUTH LINE OF THE AFOREMENTIONED 80 FOOT ROADWAY EASEMENT TO A POINT; THENCE SOUTH 27° 15' 41" WEST, 399.60 FEET TO A POINT WHICH POINT IS ON THE NORTHEASTERLY LINE OF THE AFOREMENTIONED ATCHISON, TOPEKA AND SANTA FE RAILROAD RIGHT OF WAY; THENCE NORTH 38° 54' 36" WEST ALONG SAID NORTHEASTERLY RIGHT OF WAY LINE, 596.50 FEET TO THE POINT OF BEGINNING.

PARCEL 2:

AN EASEMENT 80 FEET WIDE FOR ROAD PURPOSES OVER A PORTION OF SECTION 12 AND 13, TOWNSHIP 1 NORTH, RANGE 5 WEST, SAN BERNARDINO BASE AND MERIDIAN, ACCORDING TO THE EXTENSION OF THE LINES OF THE OFFICIAL GOVERNMENT SURVEY EXTENDED INTO RANCHO MUSCUPIABE, DESCRIBED AS FOLLOWS:

BEING 40 FEET ON EITHER SIDE OF THE CENTER LINE OF WHICH IS DESCRIBED AS FOLLOWS; (THE 40 FOOT LINES BEING LENGTHENED OR SHORTENED TO INTERSECT THE SOUTHEASTERLY LINE OF PALM AVENUE AND THE WESTERLY LINE OF PARCEL NO. 1 HEREIN).

BEGINNING AT THE SOUTHWEST CORNER OF THAT CERTAIN PARCEL OF LAND AS CONVEYED TO THE STATE OF CALIFORNIA, BY DEED RECORDED OCTOBER 25, 1953, IS BOOK 3772, PAGE 93, OFFICIAL RECORDS, AND DESCRIBED AS PARCEL "C", IN THE ABOVE MENTIONED DEED, SAID SOUTHWEST CORNER BEING ON THE EASTERLY LINE OF PALM AVENUE, 40 FEET WIDE, AS IT NOW EXISTS; THENCE SOUTH 27° 15' 41" WEST 642.71 FEET TO THE TRUE POINT OF BEGINNING OF SAID CENTER LINE; THENCE SOUTH 38° 55' 29" EAST, 1366.00 FEET TO A TANGENT CURVE CONCAVE TO THE NORTHEAST, HAVING A RADIUS OF 464.00 FEET AND A CENTRAL ANGLE OF 61° 22' 04"; THENCE SOUTHEASTERLY AND EASTERLY ALONG THE CENTER LINE OF SAID CURVE A DISTANCE OF 496.98 FEET TO A TANGENT LINE; THENCE NORTH 79° 42' 27" EAST, 354.26 FEET



**EXHIBIT A
(Continued)**

TO A TANGENT CURVE CONCAVE TO THE SOUTH, HAVING A RADIUS OF 286.00 FEET, AND A CENTRAL ANGLE OF 61° 34'; THENCE EASTERLY AND SOUTHEASTERLY ALONG THE CENTER LINE OF SAID CURVE, A DISTANCE OF 307.32 FEET TO A TANGENT LINE; THENCE SOUTH 38° 43' 33" EAST, 780.25 FEET TO A TANGENT CURVE CONCAVE TO THE SOUTHWEST, HAVING A RADIUS OF 1986.00 FEET AND A CENTRAL ANGLE OF 11° 29' 20"; THENCE SOUTHEASTERLY 398.23 FEET ALONG THE CENTER LINE OF SAID CURVE TO A TANGENT LINE; THENCE SOUTH 27° 14' 13" EAST 157.79 FEET TO THE END OF SAID 80 FEET ROAD EASEMENT.

APN 0266-041-22-0-000

PARCEL 3:

PARCEL NO. 1 OF PARCEL MAP NO. 4178, IN THE CITY OF SAN BERNARDINO, COUNTY OF SAN BERNARDINO, STATE OF CALIFORNIA, AS PER PLAT RECORDED IN BOOK 40, PAGE 44 OF PARCEL MAPS, RECORDS OF SAID COUNTY.

APN 0266-041-40-0-000

SCHEDULE B EXCEPTIONS FROM COVERAGE

This policy does not insure against loss or damage, and the Company will not pay costs, attorneys' fees, or expenses that arise by reason of:

- A. Property taxes, which are a lien not yet due and payable, including any assessments collected with taxes to be levied for the fiscal year 2021-2022.
- B. The lien of supplemental or escaped assessments of property taxes, if any, made pursuant to the provisions of Chapter 3.5 (commencing with Section 75) or Part 2, Chapter 3, Articles 3 and 4, respectively, of the Revenue and Taxation Code of the State of California as a result of the transfer of title to the vestee named in Schedule A or as a result of changes in ownership or new construction occurring on or after the Date of Policy.

THE FOLLOWING MATTERS AFFECT PARCELS 1 AND 2:

- 1. Easement(s) for the purpose(s) shown below and rights incidental thereto as set forth in a document:

In favor of: The Pacific Telephone and Telegraph Company
 Purpose: Public utilities and incidental purposes
 Recording Date: June 13, 1947
 Recording No: Book 2062, Page 97 of Official Records
 Affects: A portion of said land as more particularly described in said document.

- 2. Easement(s) for the purpose(s) shown below and rights incidental thereto as set forth in a document:

Purpose: Pipelines and incidental purposes
 Recording Date: July 21, 1948
 Recording No: Book 2265, Page 120 of Official Records
 Affects: A portion of said land as more particularly described in said document.

An instrument declaring a modification thereof was recorded September 28, 1967 in Book 6897, Page 362 of Official Records.

The exact location and extent of said easement is not disclosed of record.

- 3. Easement(s) for the purpose(s) shown below and rights incidental thereto as set forth in a document:

Purpose: Public utilities and sewers and incidental purposes
 Recording Date: April 16, 1965
 Recording No: Book 6372, Page 694 of Official Records
 Affects: A portion of said land as more particularly described in said document.

Affects: Parcel 2.



**SCHEDULE B
(Continued)**

4. Easement(s) for the purpose(s) shown below and rights incidental thereto as set forth in a document:

In favor of: San Bernardino Water Utilities Corporation
Purpose: Public utilities and incidental purposes
Recording Date: September 28, 1967
Recording No: Book 6897, Page 355 of Official Records
Affects: A portion of said land as more particularly described in said document.

5. Covenants, conditions and restrictions but omitting any covenants or restrictions, if any, including but not limited to those based upon race, color, religion, sex, gender, gender identity, gender expression, sexual orientation, marital status, national origin, ancestry, familial status, source of income, disability, veteran or military status, genetic information, medical condition, citizenship, primary language, and immigration status, as set forth in applicable state or federal laws, except to the extent that said covenant or restriction is permitted by applicable law, as set forth in the document

Recording Date: September 28, 1967
Recording No: Book 6897, Page 357 of Official Records

Said covenants, conditions and restrictions provide that a violation thereof shall not defeat the lien of any mortgage or deed of trust made in good faith and for value.

6. Easement(s) for the purpose(s) shown below and rights incidental thereto as set forth in a document:

In favor of: Southern California Edison Company, a corporation
Purpose: Public utilities and incidental purposes
Recording Date: June 29, 1982
Recording No: 82-126958 of Official Records
Affects: A portion of said land as more particularly described in said document.

7. Easement(s) for the purpose(s) shown below and rights incidental thereto as set forth in a document:

Purpose: Public utilities, drainage and incidental purposes
Recording Date: October 23, 2013
Recording No: 2013-0460724 of Official Records
Affects: A portion of said land as more particularly described in said document.

8. Intentionally Deleted

9. Intentionally Deleted

THE FOLLOWING MATTERS AFFECT PARCEL 3:

10. Easement(s) for the purpose(s) shown below and rights incidental thereto as delineated or as offered for dedication, on the map of said Parcel Map No. 4178, Book 40, Page 44 of Parcel Maps;

Purpose: Private road easement and incidental purposes
Affects: The Northerly 80 feet of said land.



**SCHEDULE B
(Continued)**

11. Easement(s) for the purpose(s) shown below and rights incidental thereto as set forth in a document:

In favor of: The Pacific Telephone and Telegraph Company, a corporation
Purpose: An easement ten (10) feet in width, to construct, place, operate, inspect, maintain, repair, replace, and remove such aerial and underground telephone, telegraph and communication structures and incidental purposes
Recording Date: June 13, 1947
Recording No: Book 2062, Page 97 of Official Records
Affects: A portion of said land as more particularly described in said document.

An instrument, upon the terms and conditions contained therein

Entitled: Partial Easement Quitclaim Deed
Recording Date: February 12, 2003
Recording No: 2003-0092649 of Official Records

12. Easement(s) for the purpose(s) shown below and rights incidental thereto as set forth in a document:

In favor of: University Shopping Center, a partnership and San Bernardino
Purpose: Roadway and incidental purposes
Recording Date: May 5, 1964
Recording No: Book 6142, Page 206 of Official Records
Affects: A portion of said land as more particularly described in said document.

and Recording Date: November 13, 1978
and Recording No: Book 9559, Page 172 of Official Records

13. Easement(s) for the purpose(s) shown below and rights incidental thereto as set forth in a document:

In favor of: Southern California Gas Company, a corporation
Purpose: Gas pipelines and incidental purposes
Recording Date: June 7, 1982
Recording No: 82-110473 of Official Records
Affects: A portion of said land as more particularly described in said document.

14. Easement(s) for the purpose(s) shown below and rights incidental thereto as set forth in a document:

In favor of: Southern California Edison Company, a corporation
Purpose: Gas pipelines and incidental purposes
Recording Date: November 10, 1982
Recording No: 82-225287 of Official Records
Affects: A portion of said land as more particularly described in said document.



**SCHEDULE B
(Continued)**

15. Easement(s) for the purpose(s) shown below and rights incidental thereto, as granted in a document:

Granted to: City of San Bernardino
Purpose: Street and highway purposes
Recording Date: January 29, 2003
Recording No: 2003-058254 of Official Records
Affects: A portion of said land as more particularly described in said document.

THE FOLLOWING MATTERS AFFECT ALL PARCELS:

16. Water rights, claims or title to water, whether or not disclosed by the public records.

17. Intentionally Deleted – Withdrawal needed prior to close

18. Intentionally Deleted.

19. Intentionally Deleted

20. Any rights, interests, or claims which may exist or arise by reason of the following matters disclosed by survey,

Job No.:
Dated:
Prepared by:
Matters shown: TBD

21. Intentionally Deleted – contingent on owners affidavit

END OF SCHEDULE B

This is a pro forma policy furnished to or on behalf of the party to be insured. It neither reflects the present status of title, nor is it intended to be a commitment to insured. The inclusion of endorsements as a part of the pro forma policy in no way evidences the willingness of the company to provide any affirmative coverage shown therein. There are requirements which must be met before a final policy can be issued in the same form as the pro forma policy. A commitment to insure setting forth these requirements should be obtained from the Company.

Additional Matters may be added or other amendments may be made to this pro forma policy by reason of any defects, liens or encumbrances that appear for the first time in the Public Records or come to the attention of the Company and are created or attached between the issuance of this pro forma policy and the issuance of a policy of title insurance. The Company shall have no liability because of such addition or amendment.



PRO FORMA ENDORSEMENT
Attached to Policy No. Pro Forma-CA-FBDO-IMP-27306-1-21-30067102
Issued By
Fidelity National Title Insurance Company

1. For purposes of this endorsement:
 - a. "Improvement" means a building, structure, road, walkway, driveway, curb, subsurface utility or water well existing at Date of Policy or to be built or constructed according to the Plans that is or will be located on the Land, but excluding crops, landscaping, lawns, shrubbery, or trees.
 - b. "Plans" means those site and elevation plans made by name of architect or engineer dated , last revised , designated as name of project consisting of sheets.

2. The Company insures against loss or damage sustained by the Insured in the event that, at Date of Policy
 - a. According to applicable zoning ordinances and amendments, the Land is not classified Zone ;
 - b. The following use or uses are not allowed under that classification:

 - c. There shall be no liability under paragraph 2.b. if the use or uses are not allowed as the result of any lack of compliance with any condition, restriction, or requirement contained in the zoning ordinances and amendments, including but not limited to the failure to secure necessary consents or authorizations as a prerequisite to the use or uses. This paragraph 2.c. does not modify or limit the coverage provided in Covered Risk 5.

3. The Company further insures against loss or damage sustained by the Insured by reason of a final decree of a court of competent jurisdiction either prohibiting the use of the Land, with any Improvement, as specified in paragraph 2.b. or requiring the removal or alteration of the Improvement, because of a violation of the zoning ordinances and amendments in effect at Date of Policy with respect to any of the following matters:
 - a. Area, width, or depth of the Land as a building site for the Improvement
 - b. Floor space area of the Improvement
 - c. Setback of the Improvement from the property lines of the Land
 - d. Height of the Improvement, or
 - e. Number of parking spaces.

4. There shall be no liability under this endorsement based on:
 - a. the invalidity of the zoning ordinances and amendments until after a final decree of a court of competent jurisdiction adjudicating the invalidity, the effect of which is to prohibit the use or uses;
 - b. the refusal of any person to purchase, lease or lend money on the Title covered by this policy.

This endorsement is issued as part of the policy. Except as it expressly states, it does not (i) modify any of the terms and provisions of the policy, (ii) modify any prior endorsements, (iii) extend the Date of Policy, or (iv) increase the Amount of Insurance. To the extent a provision of the policy or a previous endorsement is inconsistent with an express provision of this endorsement, this endorsement controls. Otherwise, this endorsement is subject to all of the terms and provisions of the policy and of any prior endorsements.

Dated: **PRO FORMA**

Fidelity National Title Insurance Company

Countersigned by:

Pro Forma Specimen

Authorized Signature

This is a Pro Forma Endorsement. It does not reflect the present state of the Title and is not a commitment to (i) insure the Title or (ii) issue any of the attached endorsements. Any such commitment must be an express written undertaking on appropriate forms of the Company.



PRO FORMA ENDORSEMENT
Attached to Policy No. Pro Forma-CA-FBDO-IMP-27306-1-21-30067102
Issued by
Fidelity National Title Insurance Company

The Company insures against loss or damage sustained by the Insured by reason of an environmental protection lien that, at Date of Policy, is recorded in the Public Records or filed in the records of the clerk of the United States district court for the district in which the Land is located, unless the environmental protection lien is set forth as an exception in Schedule B.

This endorsement is issued as part of the policy. Except as it expressly states, it does not (i) modify any of the terms and provisions of the policy, (ii) modify any prior endorsements, (iii) extend the Date of Policy, or (iv) increase the Amount of Insurance. To the extent a provision of the policy or a previous endorsement is inconsistent with an express provision of this endorsement, this endorsement controls. Otherwise, this endorsement is subject to all of the terms and provisions of the policy and of any prior endorsements.

Dated: **PRO FORMA**

Fidelity National Title Insurance Company

Countersigned by:

Pro Forma Specimen

Authorized Signature

This is a Pro Forma Endorsement. It does not reflect the present state of the Title and is not a commitment to (i) insure the Title or (ii) issue any of the attached endorsements. Any such commitment must be an express written undertaking on appropriate forms of the Company.

PRO FORMA ENDORSEMENT
Attached to Policy No. Pro Forma-CA-FBDO-IMP-27306-1-21-30067102
Issued By
Fidelity National Title Insurance Company

1. The insurance provided by this endorsement is subject to the exclusions in Section 4 of this endorsement; and the Exclusions from Coverage, the Exceptions from Coverage contained in Schedule B, and the Conditions in the policy.
2. For purposes of this endorsement only:
 - a. "Covenant" means a covenant, condition, limitation or restriction in a document or instrument in effect at Date of Policy.
 - b. "Future Improvement" means a building, structure, road, walkway, driveway, curb to be constructed on or affixed to the Land in the locations according to the Plans and that by law will constitute real property, but excluding any crops, landscaping, lawn, shrubbery, or trees.
 - c. "Improvement" means a building, structure located on the surface of the Land, road, walkway, driveway, or curb, affixed to the Land at Date of Policy and that by law constitutes real property, but excluding any crops, landscaping, lawn, shrubbery, or trees.
 - d. "Plans" means the survey, site and elevation plans or other depictions or drawings prepared by insert name of architect or engineer dated , last revised , designated as insert name of project or project number consisting of sheets.
3. The Company insures against loss or damage sustained by the Insured by reason of:
 - a. A violation of an enforceable Covenant by an Improvement on the Land at Date of Policy or by a Future Improvement, unless an exception in Schedule B of the policy identifies the violation;
 - b. Enforced removal of an Improvement located on the Land or of a Future Improvement as a result of a violation of a building setback line shown on a plat of subdivision recorded or filed in the Public Records at Date of Policy, unless an exception in Schedule B of the policy identifies the violation; or
 - c. A notice of a violation, recorded in the Public Records at Date of Policy, of an enforceable Covenant relating to environmental protection describing any part of the Land and referring to that Covenant, but only to the extent of the violation of the Covenant referred to in that notice, unless an exception in Schedule B of the policy identifies the notice of the violation.
4. This endorsement does not insure against loss or damage (and the Company will not pay costs, attorneys' fees, or expenses) resulting from:
 - a. any Covenant contained in an instrument creating a lease;
 - b. any Covenant relating to obligations of any type to perform maintenance, repair, or remediation on the Land; or
 - c. except as provided in Section 3.c, any Covenant relating to environmental protection of any kind or nature, including hazardous or toxic matters, conditions, or substances.

This endorsement is issued as part of the policy. Except as it expressly states, it does not (i) modify any of the terms and provisions of the policy, (ii) modify any prior endorsements, (iii) extend the Date of Policy, or (iv) increase the Amount of Insurance. To the extent a provision of the policy or a previous endorsement is inconsistent with an express provision of this endorsement, this endorsement controls. Otherwise, this endorsement is subject to all of the terms and provisions of the policy and of any prior endorsements.

Dated: **PRO FORMA**

Fidelity National Title Insurance Company

Countersigned by:

Pro Forma Specimen

Authorized Signature

This is a Pro Forma Endorsement. It does not reflect the present state of the Title and is not a commitment to (i) insure the Title or (ii) issue any of the attached endorsements. Any such commitment must be an express written undertaking on appropriate forms of the Company.

PRO FORMA ENDORSEMENT
Attached to Policy No. Pro Forma-CA-FBDO-IMP-27306-1-21-30067102
Issued By
Fidelity National Title Insurance Company

1. The insurance provided by this endorsement is subject to the exclusions in Section 4 of this endorsement; and the Exclusions from Coverage, the Exceptions from Coverage contained in Schedule B, and the Conditions in the policy.
2. For the purposes of this endorsement only:
 - a. "Covenant" means a covenant, condition, limitation or restriction in a document or instrument recorded in the Public Records at Date of Policy.
 - b. "Private Right" means (i) an option to purchase; (ii) a right of first refusal; or (iii) a right of prior approval of a future purchaser or occupant.
3. The Company insures against loss or damage sustained by the Insured under this Owner's Policy if enforcement of a Private Right in a Covenant affecting the Title at Date of Policy based on a transfer of Title on or before Date of Policy causes a loss of the Insured's Title.
4. This endorsement does not insure against loss or damage (and the Company will not pay costs, attorneys' fees, or expenses) resulting from:
 - a. any Covenant contained in an instrument creating a lease;
 - b. any Covenant relating to obligations of any type to perform maintenance, repair, or remediation on the Land;
 - c. any Covenant relating to environmental protection of any kind or nature, including hazardous or toxic matters, conditions, or substances; or
 - d. any Private Right in an instrument identified in Exception(s) in Schedule B.

This endorsement is issued as part of the policy. Except as it expressly states, it does not (i) modify any of the terms and provisions of the policy, (ii) modify any prior endorsements, (iii) extend the Date of Policy, or (iv) increase the Amount of Insurance. To the extent a provision of the policy or a previous endorsement is inconsistent with an express provision of this endorsement, this endorsement controls. Otherwise, this endorsement is subject to all of the terms and provisions of the policy and of any prior endorsements.

Dated: **PRO FORMA**

Fidelity National Title Insurance Company

Countersigned by:

Pro Forma Specimen

Authorized Signature

This is a Pro Forma Endorsement. It does not reflect the present state of the Title and is not a commitment to (i) insure the Title or (ii) issue any of the attached endorsements. Any such commitment must be an express written undertaking on appropriate forms of the Company.

PRO FORMA ENDORSEMENT
Attached to Policy No. Pro Forma-CA-FBDO-IMP-27306-1-21-30067102
Issued by
Fidelity National Title Insurance Company

The Company insures against loss or damage sustained by the Insured if, at Date of Policy (i) the Land does not abut and have both actual vehicular and pedestrian access to and from (the "Street"), (ii) the Street is not physically open and publicly maintained, or (iii) the Insured has no right to use existing curb cuts or entries along that portion of the Street abutting the Land.

This endorsement is issued as part of the policy. Except as it expressly states, it does not (i) modify any of the terms and provisions of the policy, (ii) modify any prior endorsements, (iii) extend the Date of Policy, or (iv) increase the Amount of Insurance. To the extent a provision of the policy or a previous endorsement is inconsistent with an express provision of this endorsement, this endorsement controls. Otherwise, this endorsement is subject to all of the terms and provisions of the policy and of any prior endorsements.

Dated: **PRO FORMA**

Fidelity National Title Insurance Company

Countersigned by:

Pro Forma Specimen

Authorized Signature

This is a Pro Forma Endorsement. It does not reflect the present state of the Title and is not a commitment to (i) insure the Title or (ii) issue any of the attached endorsements. Any such commitment must be an express written undertaking on appropriate forms of the Company.



PRO FORMA ENDORSEMENT
Attached to Policy No. Pro Forma-CA-FBDO-IMP-27306-1-21-30067102
Issued by
Fidelity National Title Insurance Company

The Company insures against loss or damage sustained by the Insured if, at Date of Policy (i) the easement identified in Schedule (the "Easement") does not provide that portion of the Land identified in Schedule both actual vehicular and pedestrian access to and from (the "Street"), (ii) the Street is not physically open and publicly maintained, or (iii) the Insured has no right to use existing curb cuts or entries along that portion of the Street abutting the Easement.

This endorsement is issued as part of the policy. Except as it expressly states, it does not (i) modify any of the terms and provisions of the policy, (ii) modify any prior endorsements, (iii) extend the Date of Policy, or (iv) increase the Amount of Insurance. To the extent a provision of the policy or a previous endorsement is inconsistent with an express provision of this endorsement, this endorsement controls. Otherwise, this endorsement is subject to all of the terms and provisions of the policy and of any prior endorsements.

Dated: **PRO FORMA**

Fidelity National Title Insurance Company

Countersigned by:

Pro Forma Specimen

Authorized Signature

This is a Pro Forma Endorsement. It does not reflect the present state of the Title and is not a commitment to (i) insure the Title or (ii) issue any of the attached endorsements. Any such commitment must be an express written undertaking on appropriate forms of the Company.



PRO FORMA ENDORSEMENT
Attached to Policy No. Pro Forma-CA-FBDO-IMP-27306-1-21-30067102
Issued by
Fidelity National Title Insurance Company

The Company insures against loss or damage sustained by the Insured by reason of the lack of a right of access to the following utilities or services: (CHECK ALL THAT APPLY)

- | | | |
|---|--|---|
| <input type="checkbox"/> Water service | <input type="checkbox"/> Natural gas service | <input type="checkbox"/> Telephone service |
| <input type="checkbox"/> Electrical power service | <input type="checkbox"/> Sanitary sewer | <input type="checkbox"/> Storm water drainage |
| <input type="checkbox"/> | <input type="checkbox"/> | <input type="checkbox"/> |

either over, under or upon rights-of-way or easements for the benefit of the Land because of:

- (1) a gap or gore between the boundaries of the Land and the rights-of-way or easements;
- (2) a gap between the boundaries of the rights-of-way or easements ; or
- (3) a termination by a grantor, or its successor, of the rights-of-way or easements.

This endorsement is issued as part of the policy. Except as it expressly states, it does not (i) modify any of the terms and provisions of the policy, (ii) modify any prior endorsements, (iii) extend the Date of Policy, or (iv) increase the Amount of Insurance. To the extent a provision of the policy or a previous endorsement is inconsistent with an express provision of this endorsement, this endorsement controls. Otherwise, this endorsement is subject to all of the terms and provisions of the policy and of any prior endorsements.

Dated: **PRO FORMA**

Fidelity National Title Insurance Company

Countersigned by:

Pro Forma Specimen

Authorized Signature

This is a Pro Forma Endorsement. It does not reflect the present state of the Title and is not a commitment to (i) insure the Title or (ii) issue any of the attached endorsements. Any such commitment must be an express written undertaking on appropriate forms of the Company.



PRO FORMA ENDORSEMENT
Attached to Policy No. Pro Forma-CA-FBDO-IMP-27306-1-21-30067102
Issued By
Fidelity National Title Insurance Company

The Company insures against loss or damage sustained by the Insured by reason of:

- those portions of the Land identified below not being assessed for real estate taxes under the listed tax identification numbers or those tax identification numbers including any additional land:

Parcel	Tax Identification Number(s)
---------------	-------------------------------------

- the easements, if any, described in Schedule A being cut off or disturbed by the nonpayment of real estate taxes, assessments or other charges imposed on the servient estate by a governmental authority.

This endorsement is issued as part of the policy. Except as it expressly states, it does not (i) modify any of the terms and provisions of the policy, (ii) modify any prior endorsements, (iii) extend the Date of Policy, or (iv) increase the Amount of Insurance. To the extent a provision of the policy or a previous endorsement is inconsistent with an express provision of this endorsement, this endorsement controls. Otherwise, this endorsement is subject to all of the terms and provisions of the policy and of any prior endorsements.

Dated: **PRO FORMA**

Fidelity National Title Insurance Company

Countersigned by:

Pro Forma Specimen

Authorized Signature

This is a Pro Forma Endorsement. It does not reflect the present state of the Title and is not a commitment to (i) insure the Title or (ii) issue any of the attached endorsements. Any such commitment must be an express written undertaking on appropriate forms of the Company.



PRO FORMA ENDORSEMENT
Attached to Policy No. Pro Forma-CA-FBDO-IMP-27306-1-21-30067102
Issued by
Fidelity National Title Insurance Company

The Company insures against loss or damage sustained by the Insured by reason of:

1. the failure ; or
2. the presence of any gaps, strips, or gores separating any of the contiguous boundary lines described above.

This endorsement is issued as part of the policy. Except as it expressly states, it does not (i) modify any of the terms and provisions of the policy, (ii) modify any prior endorsements, (iii) extend the Date of Policy, or (iv) increase the Amount of Insurance. To the extent a provision of the policy or a previous endorsement is inconsistent with an express provision of this endorsement, this endorsement controls. Otherwise, this endorsement is subject to all of the terms and provisions of the policy and of any prior endorsements.

Dated: **PRO FORMA**

Fidelity National Title Insurance Company

Countersigned by:

Pro Forma Specimen

Authorized Signature

This is a Pro Forma Endorsement. It does not reflect the present state of the Title and is not a commitment to (i) insure the Title or (ii) issue any of the attached endorsements. Any such commitment must be an express written undertaking on appropriate forms of the Company.



PRO FORMA ENDORSEMENT
Attached to Policy No. Pro Forma-CA-FBDO-IMP-27306-1-21-30067102
Issued by
Fidelity National Title Insurance Company

The Company insures against loss or damage sustained by the Insured by reason of the failure of a _____, known as _____, to be located on the Land at Date of Policy.

This endorsement is issued as part of the policy. Except as it expressly states, it does not (i) modify any of the terms and provisions of the policy, (ii) modify any prior endorsements, (iii) extend the Date of Policy, or (iv) increase the Amount of Insurance. To the extent a provision of the policy or a previous endorsement is inconsistent with an express provision of this endorsement, this endorsement controls. Otherwise, this endorsement is subject to all of the terms and provisions of the policy and of any prior endorsements.

Dated: **PRO FORMA**

Fidelity National Title Insurance Company

Countersigned by:

Pro Forma Specimen

Authorized Signature

This is a Pro Forma Endorsement. It does not reflect the present state of the Title and is not a commitment to (i) insure the Title or (ii) issue any of the attached endorsements. Any such commitment must be an express written undertaking on appropriate forms of the Company.



PRO FORMA ENDORSEMENT
Attached to Policy No. Pro Forma-CA-FBDO-IMP-27306-1-21-30067102
Issued by
Fidelity National Title Insurance Company

The Company insures against loss or damage sustained by the Insured by reason of the failure of the Land as described in Schedule A to be the same as that identified on the survey made by dated , and designated Job No. .

This endorsement is issued as part of the policy. Except as it expressly states, it does not (i) modify any of the terms and provisions of the policy, (ii) modify any prior endorsements, (iii) extend the Date of Policy, or (iv) increase the Amount of Insurance. To the extent a provision of the policy or a previous endorsement is inconsistent with an express provision of this endorsement, this endorsement controls. Otherwise, this endorsement is subject to all of the terms and provisions of the policy and of any prior endorsements.

Dated: **PRO FORMA**

Fidelity National Title Insurance Company

Countersigned by:

Pro Forma Specimen

Authorized Signature

This is a Pro Forma Endorsement. It does not reflect the present state of the Title and is not a commitment to (i) insure the Title or (ii) issue any of the attached endorsements. Any such commitment must be an express written undertaking on appropriate forms of the Company.



PRO FORMA ENDORSEMENT
Attached to Policy No. Pro Forma-CA-FBDO-IMP-27306-1-21-30067102
Issued By
Fidelity National Title Insurance Company

1. The insurance provided by this endorsement is subject to the exceptions in Section 4 of this endorsement; and the Exclusions from Coverage, the Exceptions from Coverage contained in Schedule B, and the Conditions in the policy.
2. For purposes of this endorsement only:
 - (a) "Improvement" means a building, structure, or paved area, including any road, walkway, parking area, driveway, or curb located on the surface of the Land or the surface of adjoining land at Date of Policy that by law constitutes real property.
 - (b) "Future Improvement" means any of the following to be constructed on the Land after Date of Policy in the locations according to the Plans and that by law constitutes real property:
 - (i) a building;
 - (ii) a structure; or
 - (iii) a paved area, including any road, walkway, parking area, driveway, or curb.
 - (c) "Plans" mean the survey, site and elevation plans, or other depictions or drawings prepared by dated , last revised , designated as consisting of sheets.
3. The Company insures against loss or damage sustained by the Insured by reason of:
 - (a) An encroachment of any Improvement or Future Improvement located on the Land onto adjoining land or onto that portion of the Land subject to an easement, unless an Exception in Schedule B of the policy identifies the encroachment;
 - (b) An encroachment of any Improvement located on adjoining land onto the Land at Date of Policy, unless an Exception in Schedule B of the policy identifies the encroachment;
 - (c) Enforced removal of any Improvement or Future Improvement located on the Land as a result of an encroachment by the Improvement or Future Improvement onto any portion of the Land subject to any easement, in the event that the owners of the easement shall, for the purpose of exercising the right of use or maintenance of the easement, compel removal or relocation of the encroaching Improvement or Future Improvement; or
 - (d) Enforced removal of any Improvement or Future Improvement located on the Land that encroaches onto adjoining land.
4. Sections 3(c) and 3(d) of this endorsement do not insure against loss or damage (and the Company will not pay costs, attorneys' fees, or expenses) resulting from the following Exceptions, if any, listed in Schedule B:

This endorsement is issued as part of the policy. Except as it expressly states, it does not (i) modify any of the terms and provisions of the policy, (ii) modify any prior endorsements, (iii) extend the Date of Policy, or (iv) increase the Amount of Insurance. To the extent a provision of the policy or a previous endorsement is inconsistent with an express provision of this endorsement, this endorsement controls. Otherwise, this endorsement is subject to all of the terms and provisions of the policy and of any prior endorsements.

Dated: **PRO FORMA**

Fidelity National Title Insurance Company

Countersigned by:

Pro Forma Specimen

Authorized Signature

This is a Pro Forma Endorsement. It does not reflect the present state of the Title and is not a commitment to (i) insure the Title or (ii) issue any of the attached endorsements. Any such commitment must be an express written undertaking on appropriate forms of the Company.



PRO FORMA ENDORSEMENT
Attached to Policy No. Pro Forma-CA-FBDO-IMP-27306-1-21-30067102
Issued By
Fidelity National Title Insurance Company

When the policy is issued by the Company with a policy number and Date of Policy, the Company will not deny liability under the policy or any endorsements issued with the policy solely on the grounds that the policy or endorsements were issued electronically or lack signatures in accordance with the Conditions.

This endorsement is issued as part of the policy. Except as it expressly states, it does not (i) modify any of the terms and provisions of the policy, (ii) modify any prior endorsements, (iii) extend the Date of Policy, or (iv) increase the Amount of Insurance. To the extent a provision of the policy or a previous endorsement is inconsistent with an express provision of this endorsement, this endorsement controls. Otherwise, this endorsement is subject to all of the terms and provisions of the policy and of any prior endorsements.

Dated: **PRO FORMA**

Fidelity National Title Insurance Company

Countersigned by:

Pro Forma Specimen

Authorized Signature

This is a Pro Forma Endorsement. It does not reflect the present state of the Title and is not a commitment to (i) insure the Title or (ii) issue any of the attached endorsements. Any such commitment must be an express written undertaking on appropriate forms of the Company.

PRO FORMA ENDORSEMENT
Attached to Policy No. Pro Forma-CA-FBDO-IMP-27306-1-21-30067102
Issued By
Fidelity National Title Insurance Company

1. The insurance provided by this endorsement is subject to the exclusion in Section 4 of this endorsement; and the Exclusions from Coverage, the Exceptions from Coverage contained in Schedule B, and the Conditions in the policy.
2. For purposes of this endorsement only, "Improvement" means a building on the Land at Date of Policy.
3. The Company insures against loss or damage sustained by the Insured by reason of the enforced removal or alteration of any Improvement resulting from the future exercise of any right existing at Date of Policy to use the surface of the Land for the extraction or development of water excepted from the description of the Land or excepted in Schedule B.
4. This endorsement does not insure against loss or damage (and the Company will not pay costs, attorneys' fees, or expenses) resulting from:
 - a. contamination, explosion, fire, flooding, vibration, fracturing, earthquake or subsidence; or
 - b. negligence by a person or an Entity exercising a right to extract or develop water; or
 - c. the exercise of the rights described in .

This endorsement is issued as part of the policy. Except as it expressly states, it does not (i) modify any of the terms and provisions of the policy, (ii) modify any prior endorsements, (iii) extend the Date of Policy, or (iv) increase the Amount of Insurance. To the extent a provision of the policy or a previous endorsement is inconsistent with an express provision of this endorsement, this endorsement controls. Otherwise, this endorsement is subject to all of the terms and provisions of the policy and of any prior endorsements.

Dated: **PRO FORMA**

Fidelity National Title Insurance Company

Countersigned by:

Pro Forma Specimen

Authorized Signature

This is a Pro Forma Endorsement. It does not reflect the present state of the Title and is not a commitment to (i) insure the Title or (ii) issue any of the attached endorsements. Any such commitment must be an express written undertaking on appropriate forms of the Company.



PRO FORMA ENDORSEMENT
Attached to Policy No. Pro Forma-CA-FBDO-IMP-27306-1-21-30067102
Issued by
Fidelity National Title Insurance Company

The policy is hereby amended by deleting Paragraph 13 of the Conditions, relating to Arbitration.

This endorsement is issued as part of the policy. Except as it expressly states, it does not (i) modify any of the terms and provisions of the policy, (ii) modify any prior endorsements, (iii) extend the Date of Policy, or (iv) increase the Amount of Insurance. To the extent a provision of the policy or a previous endorsement is inconsistent with an express provision of this endorsement, this endorsement controls. Otherwise, this endorsement is subject to all of the terms and provisions of the policy and of any prior endorsements.

Dated: **PRO FORMA**

Fidelity National Title Insurance Company

Countersigned by:

Pro Forma Specimen

Authorized Signature

This is a Pro Forma Endorsement. It does not reflect the present state of the Title and is not a commitment to (i) insure the Title or (ii) issue any of the attached endorsements. Any such commitment must be an express written undertaking on appropriate forms of the Company.

2. Mitchell M. Tsai, Received May 3, 2022 (1 page)

P: (626) 381-9248
F: (626) 389-5414
E: info@mitschtsailaw.com



Mitchell M. Tsai
Attorney At Law

139 South Hudson Avenue
Suite 200
Pasadena, California 91101

VIA E-MAIL

May 3, 2022

Harald Luna
Senior Planner
City of San Bernardino
201 North E Street, Building A
San Bernardino, CA 92407
Em: luna_ha@sbcity.org

RE: Industrial Parkway Project – (SCH #: 2022040166)

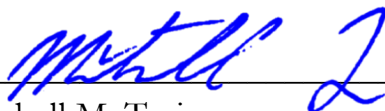
Dear Harald Luna

On behalf of the Southwest Regional Council of Carpenters (“**Southwest Carpenters**” or “**SWRCC**”), my Office is submitting these comments on the City of San Bernardino’s (“**City**”) Notice of Intent to Adopt a Mitigated Negative Declaration for the Industrial Parkway Project (SCH #: 2022040166 (“**Project**”).

The Southwest Carpenters would like to express their support for this Project and withdraw their prior April 28, 2022 comment letter. After received clarification and further information about this Project, SWRCC believes that this Project will benefit the environment and the local economy by utilizing a local skilled and trained workforce and will be built utilizing protocols that will protect worker health and safety.

If the City has any questions or concerns, feel free to contact my Office.

Sincerely,



Mitchell M. Tsai

Attorneys for Southwest Regional
Council of Carpenters